

Catalog

How to order.....	1
Subminiature Circular Series.....	2
Micro circular Series.....	3-6
Standard Circular Series.....	7-9
High Current Series.....	10-11
Oil-filled Series.....	12-13
Micro Circular Network Series	14-15
Coaxial Series and Split-petal Series.....	16-18
RM Series.....	19-21
Rubber Series 2Pin	22
Self-locking Series.....	23
Micro Flat Angled Series.....	24
Standard Flat Angled Series.....	25-30
Metal Shell 55 Series.....	31-37
Metal Shell High Voltage Series.....	36
Metal Shell 66 Series.....	38
Metal shell MSSG series.....	39-42
Fiber Optic Series.....	43-45
Underwater wet-mate connector.....	46-47

How to Order

Connectors

S: Subminiature	MC	BH	RA	2	F	SS
MC: Micro						
LP: Flat Shape						
HP: High Power						
BH: Bulkhead						
IL: Inline						
DC: Dummy						
RA: Right Angle						
2: Pin Number						
F: Female Pin						
M: Male Pin						
SS: Made from stainless steel						
TI: Made from titanium alloy						

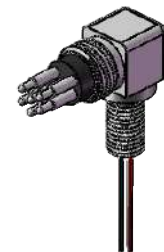
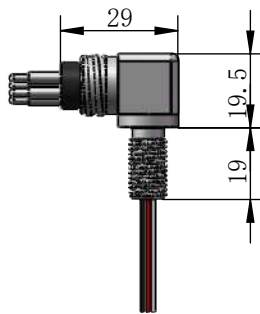
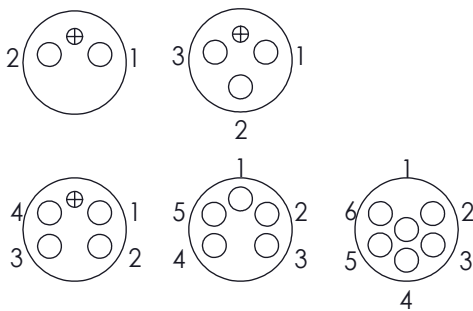
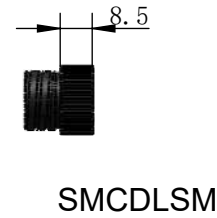
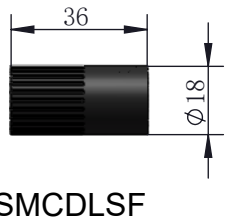
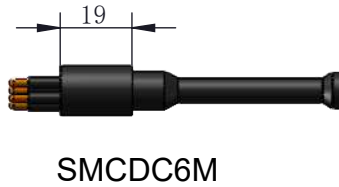
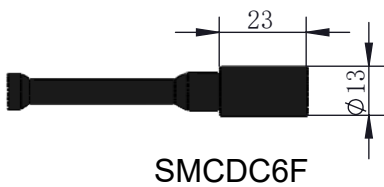
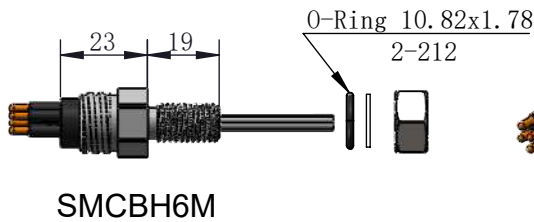
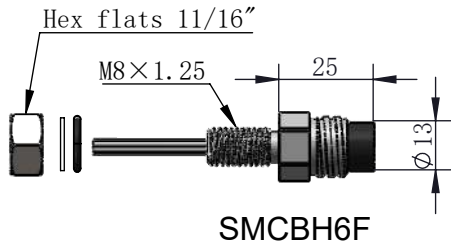
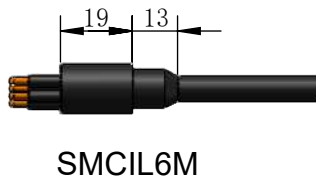
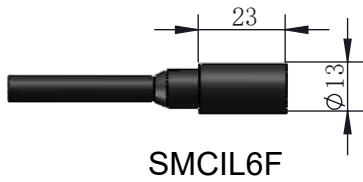
Locking Sleeves

DSL: Polyoxymethylene	DSL	A	F
MCDLS: Micro Polyoxymethylene			
A: 2, 3, 4&5Pin			
Micro: 10, 12&16Pin			
B: 1, 6, 8&10Pin			
C: 12&16Pin			
F: Female			
M: Male			

Coaxial Series and Split-petal Series

4101-8/32 (50C) -11-0050	
	Cable length, Unit: cm
	11: Pin, 00: Socket
	Total Pin Number (Coaxial Impedance)
	Number of Pins per Petal
	01 = cable plug
	02 = metal penetration
	03 = Dummy Plug
	Outer Diameter for the Whole Plug
	41: Split-Petal outer diameter
	15/25: coaxial outer diameter

Subminiature Circular Series (2-6Pin)



Male Face View: Clockwise (Female: Anticlockwise)

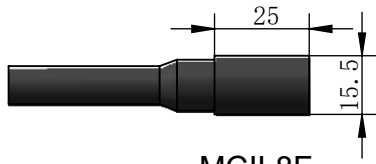
MCBHRA6MSS

Specification:
Number of cores: 2、 3、 4、 5、 6 core
Electrical Characteristics:
Wire cross-section(2-4 core): 0.5 mm ² wire; 300V@3Amp
Wire cross-section(5 core): 0.3mm ² wire; 300V@2Amp
Wire cross-section(6 core): 0.2 mm ² network cable; 200V@1Amp
Contact resistance: <0.01Ω
Insulation resistance: >200 MΩ
Durability Life: >500 times
Temperature: -4° ~ +60° C

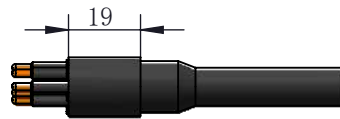
Depth: 6000 meters
Pressure-resistant water depth: 3000 meters
Wire Color for 2 3 4 5pin:
1 black, 2 white, 3 red, 4 green, 5 orange
Wire Color for 6pin:
1 Brown, 2 Brown/White, 3 Blue, 4 Blue/White, 5 Orange, 6 Orange/White
Cable Diameter: 5mm, PVC (for 2 3 4Pin)
Cable Diameter: 6mm, PU (for 5 6Pin)
Materials:
Plug: Neoprene

Socket: 316 stainless steel/ titanium alloy
Pin: Gold-plated copper
Nut and gasket: Stainless steel
O ring: Nitrile
Locking cap: Polyoxymethylene
Dimensions: mm
Thread: Metric M8
Can be customized:
1: Cable Length
2: Shell Material: stainless steel/ titanium alloy

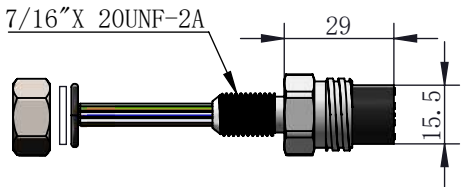
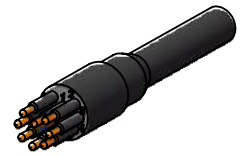
Micro circular Series (2-8Pin)



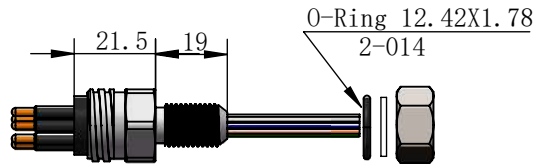
MCIL8F



MCIL8M



MCBH8FSS



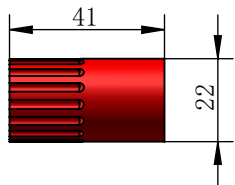
MCBH8MSS



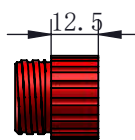
MCDC8F



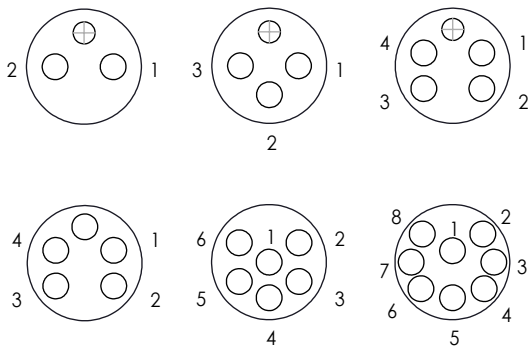
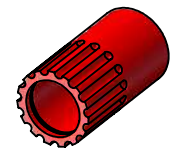
MCDC8M



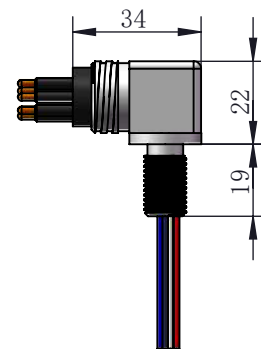
MCDLSF



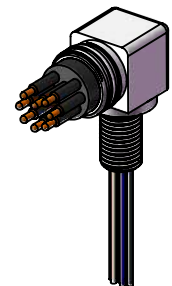
MCDLSM



Male Face View (2-8)



MCBHRA8MSS



Specification:

Number of cores: 2, 3, 4, 5, 6, 8 core

Wire cross-section(Plug): 2-4pin 1mm² ; 5-8pin 0.5mm²

Wire cross-section(Socket): 2-4pin 1mm² ; 5-8pin 0.5mm²

Electrical Characteristics: 300V@3-10Amp

Contact resistance: <0.01Ω

Insulation resistance: >200 MΩ

Durability Life: >500 times

Temperature: -4° ~ +60° C

Depth: 6000 meters(600bar)

Wire Color:

1Black 2White 3Red 4Green

5Orange 6Blue 7White/Black,Purple 8Red/Black, Brown

Materials:

Plug: Neoprene

Socket: 316 stainless steel/ titanium alloy

Pin: Gold-plated copper

Nut and gasket: Stainless steel

O ring: Nitrile

Locking cap: Polyoxymethylene (Red, Black, Blue)

Dimensions: mm

Thread: Imperial 7/16

1 inch = 25.4 mm

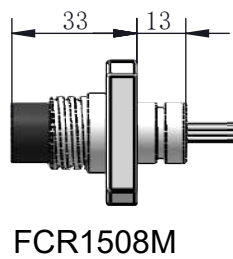
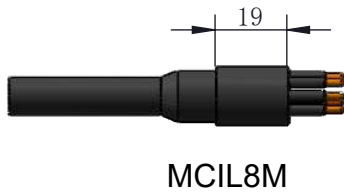
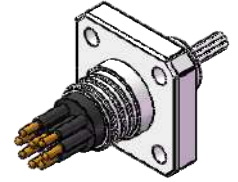
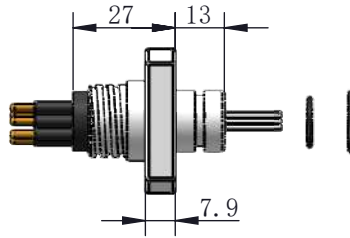
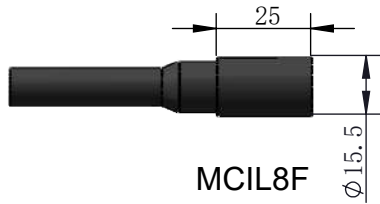
Can be customized:

1: Cable Length

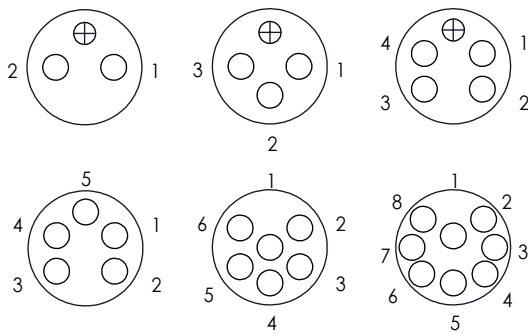
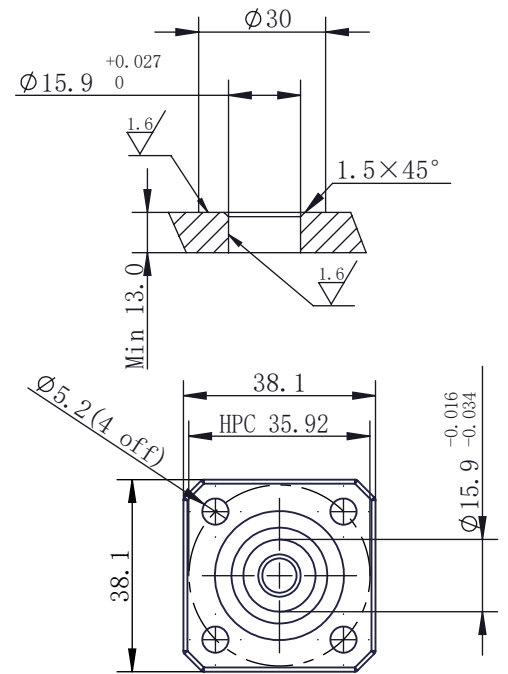
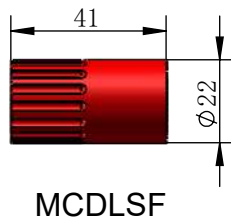
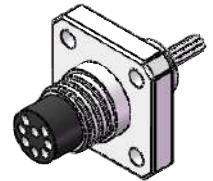
2: Shell Material: stainless steel/ titanium alloy

3: Screw length

Flange Mount Micro circular Series (2-8Pin)



O-Ring 19.0×2.5
O-Ring 13.0×1.5



Male Face View

Back View

Specification:

Number of cores: 2、3、4、5、6、8 core
Wire cross-section(Plug): 2-4pin 1mm² ; 5-8pin 0.5mm²
Wire cross-section(Socket): 2-4pin 1mm² ; 5-8pin 0.5mm²
Electrical Characteristics: 300V@3-10Amp
Contact resistance: <0.01Ω
Insulation resistance: >200 MΩ
Durability Life: >500 times
Temperature: -4° ~ +60° C
Depth: 6000 meters

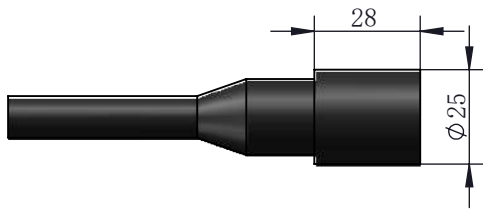
Wire Color:

1Black 2White 3Red 4Green
5Orange 6Blue 7White/Black 8Red/Black
Materials:
Plug: Neoprene
Socket: 316 stainless steel/ titanium alloy
Pin: Gold-plated copper
Nut and gasket: Stainless steel
O ring: Nitrile
Locking cap: Polyoxymethylene (Red, Black, Blue)

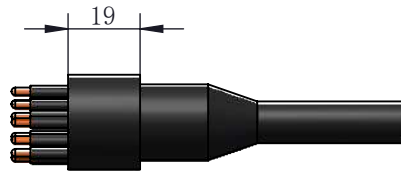
Dimensions: mm

Thread: Imperial
1 inch = 25.4 mm
Can be customized:
1: Cable Length
2: Shell Material: stainless steel/ titanium alloy
3: Screw length

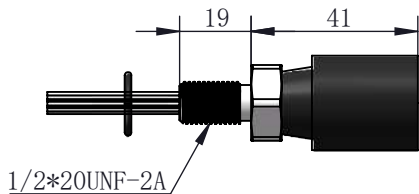
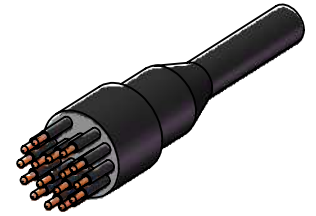
Micro circular Series (9-16Pin A Type)



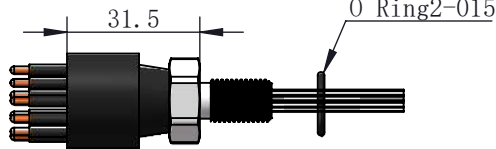
MCIL16F



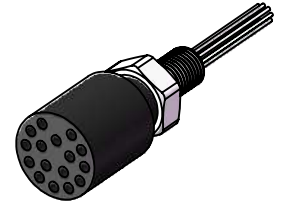
MCIL16M



MCBH16FSS



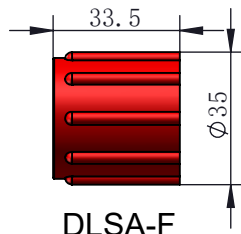
MCBH16MSS



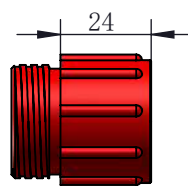
MCDC16F



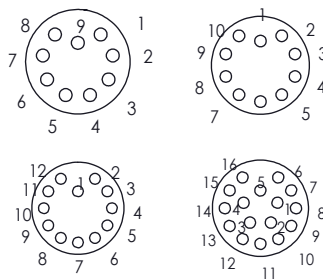
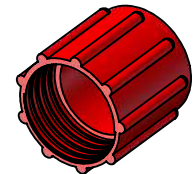
MCDC16M



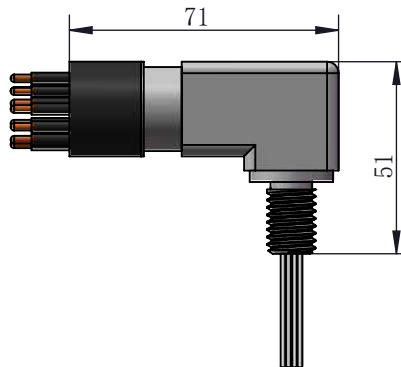
DLSA-F



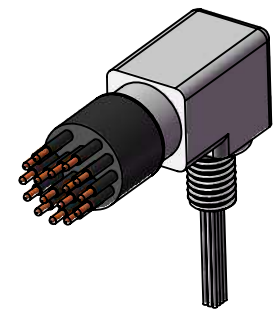
DLSA-M



Male Face View (9-16)



MCBHRA16MSS



Specification:

- Number of cores: 9、 10、 12、 16 core
- Wire cross-section(Plug): 0.5mm²
- Wire cross-section(Socket): 0.5mm²
- Electrical Characteristics: 300V@3-5Amp
- Contact resistance: <0.01Ω
- Insulation resistance: >200 MΩ
- Durability Life: >500 times
- Temperature: -4° ~ +60° C
- Depth: 6000 meters (600 bar)

Wire Color:

- White(with number label)
- Materials:
- Plug: Neoprene
- Socket: 316 stainless steel/ titanium alloy
- Pin: Gold-plated copper
- Nut and gasket: Stainless steel
- O ring: Nitrile
- Locking cap: Polyoxymethylene

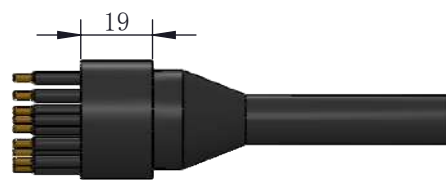
Dimensions: mm

- Thread: Imperial 1/2
- 1 inch = 25.4 mm
- Can be customized:
- 1: Cable Length
- 2: Shell Material: stainless steel/ titanium alloy
- 3: Screw length

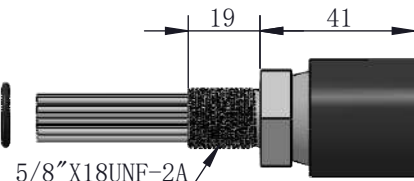
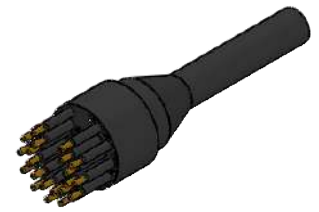
Micro circular Series (21Pin B Type)



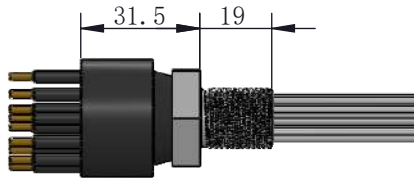
MCIL21F



MCIL21M

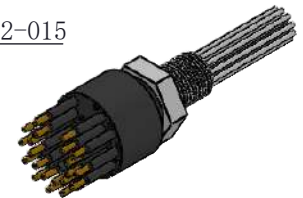


MCBH21FSS

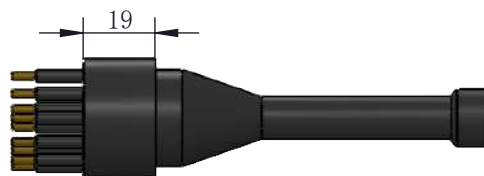


MCBH21MSS

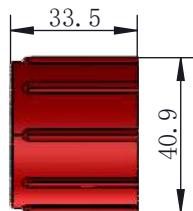
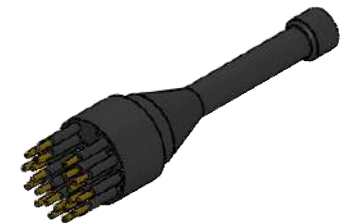
O Ring2-015



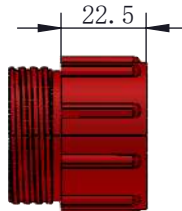
MCDC21F



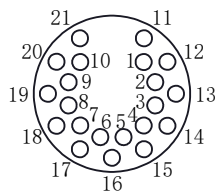
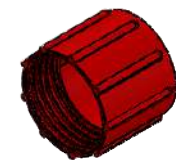
MCDC21M



DLSB-F



DLSB-M



Male Face View (21)

Specification:
Number of cores: 21 core
Wire cross-section(Plug): 0.5mm ²
Wire cross-section(Socket): 0.5mm ²
Electrical Characteristics: 300V@2-5Amp
Contact resistance: <0.01Ω
Insulation resistance: >200 MΩ
Durability Life: >500 times
Temperature: -4° ~ +60° C
Depth: 6000 meters (600 bar)

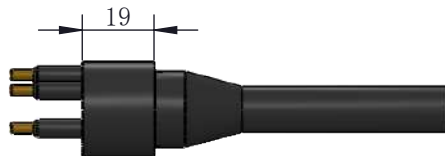
Wire Color:
White(with number label)
Materials:
Plug: Neoprene
Socket: 316 stainless steel/ titanium alloy
Pin: Gold-plated copper
Nut and gasket: Stainless steel
O ring: Nitrile
Locking cap: Polyoxymethylene

Dimensions: mm
Thread: Imperial 5/8
1 inch = 25.4 mm
Can be customized:
1: Cable Length
2: Shell Material: stainless steel/ titanium alloy
3: Screw length

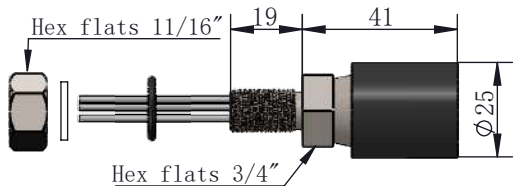
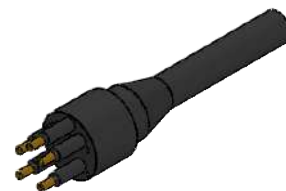
Standard Circular Series (2-5Pin A Type)



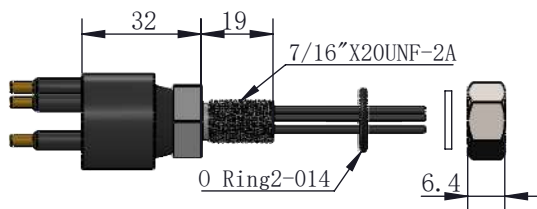
IL5F



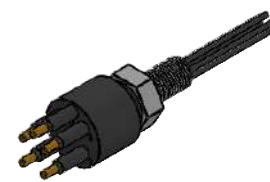
IL5M



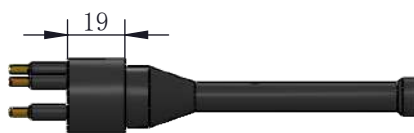
BH5F



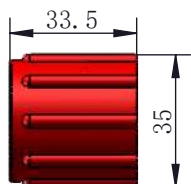
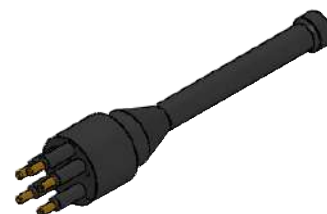
BH5M



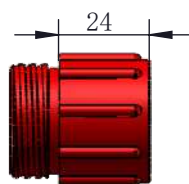
DC5F



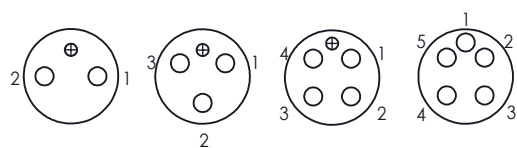
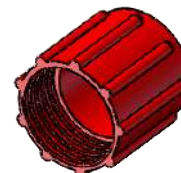
DC5M



DLSA-F



DLSA-M



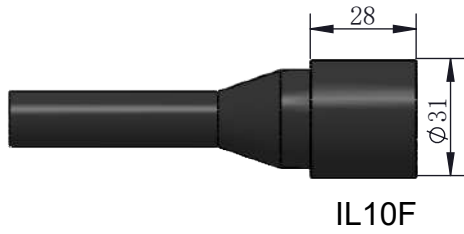
Male Face View (2-5)

Specification:
Number of cores: 2, 3, 4, 5 core
Wire cross-section(Plug): 1mm ²
Wire cross-section(Socket): 1mm ²
Electrical Characteristics: 600V@6-15Amp
Contact resistance: <0.01Ω
Insulation resistance: >200 MΩ
Durability Life: >500 times
Temperature: -4° ~ +60° C
Depth: 6000 meters (600 bar)

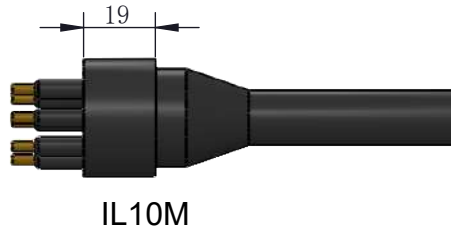
Pressure-resistant water depth: 3000 meters
Wire Color:
1black 2white 3red 4green 5orange
Materials:
Plug: Neoprene
Socket: 316 stainless steel/ titanium alloy
Pin: Gold-plated copper
Nut and gasket: Stainless steel
O ring: Nitrile

Locking cap: Polyoxymethylene
Dimensions: mm
Thread: Imperial 7/16
1 inch = 25.4 mm
Can be customized:
1: Cable Length
2: Shell Material: stainless steel/ titanium alloy
3: Screw length

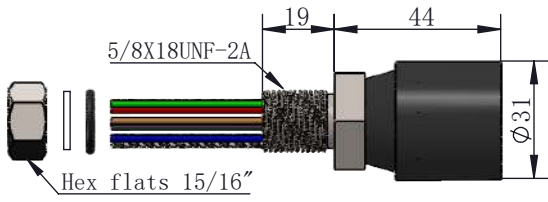
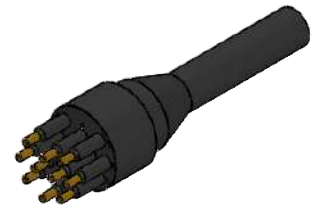
Standard Circular Series (6-10Pin B Type)



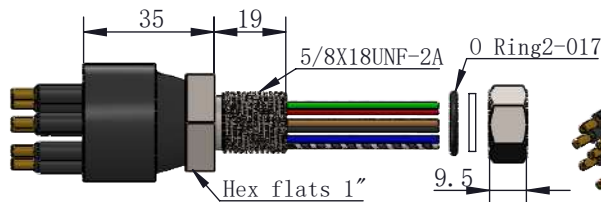
IL10F



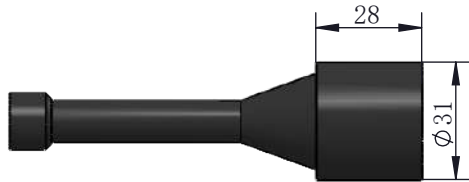
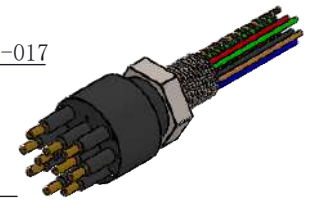
IL10M



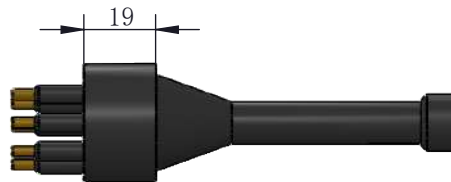
BH10F



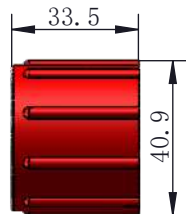
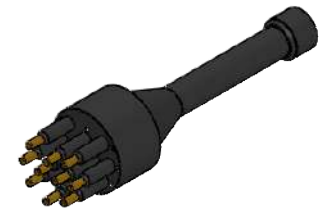
BH10M



DC10F



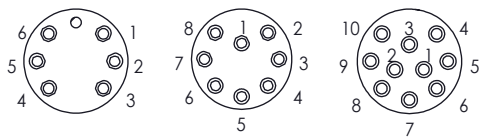
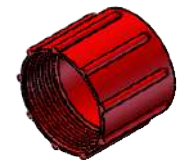
DC10M



DLSB-F



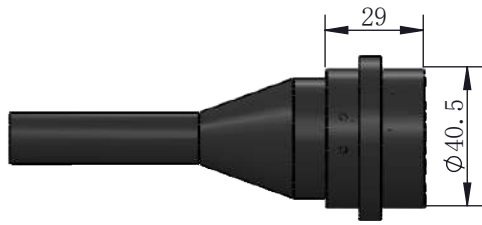
DLSB-M



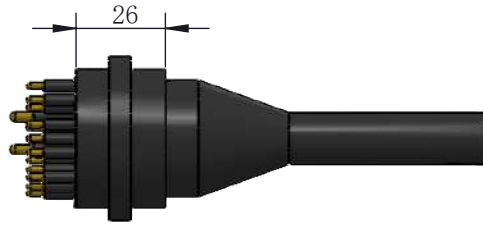
Male Face View (6-10)

Specification:	Pressure-resistant water depth: 3000 meters	O ring: Nitrile
Number of cores: 6、8、10 core	Wire Color (6pin 8pin) :	Locking cap: Polyoxymethylene
Wire cross-section(Plug): 1mm ²	1blac 2white 3red 4green 5orange	Elastic snap ring: Stainless steel
Wire cross-section(Socket): 1mm ²	6 blue 7white/black 8red/black, brown	Dimensions: mm
Electrical Characteristics: 600V@6-15Amp	Wire Color (10pin): White	Thread: Imperial 7/16
Contact resistance: <0.01Ω	Materials:	1 inch = 25.4 mm
Insulation resistance: >200 MΩ	Plug: Neoprene	Can be customized:
Durability Life: >500 times	Socket: 316 stainless steel/ titanium alloy	1: Cable Length
Temperature: -4° ~ +60° C	Pin: Gold-plated copper	2: Shell Material: stainless steel/ titanium alloy
Depth: 6000 meters	Nut and gasket: Stainless steel	3: Screw length

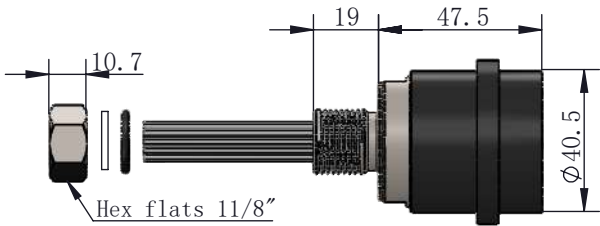
Standard Circular Series (12-25Pin C Type)



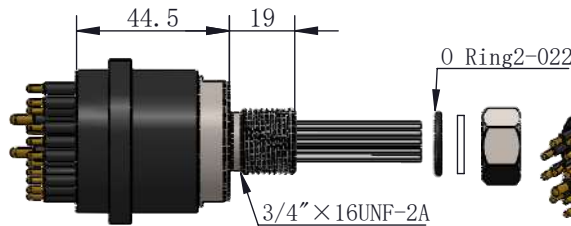
IL25F



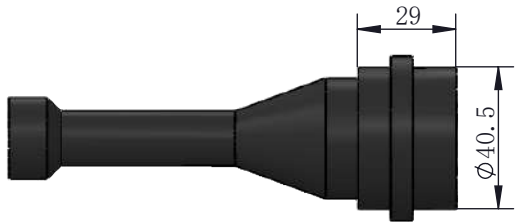
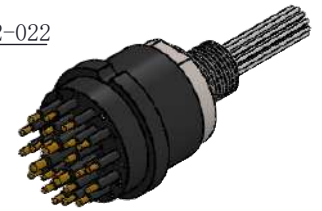
IL25M



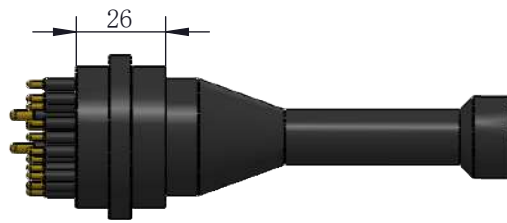
BH25F



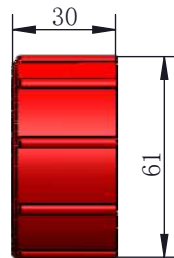
BH25M



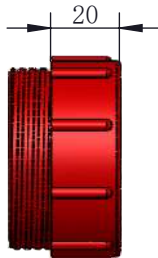
DC25F



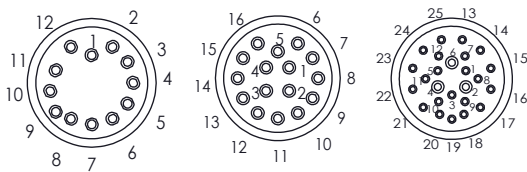
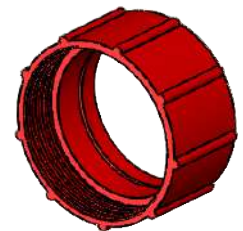
DC25M



DLSC-F



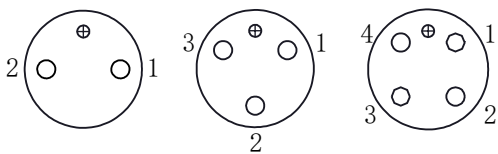
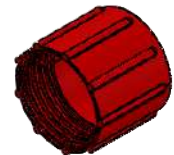
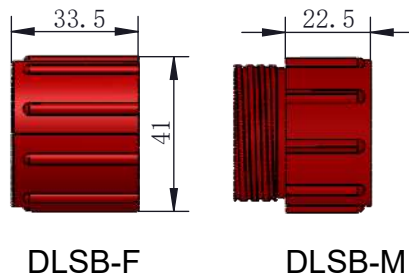
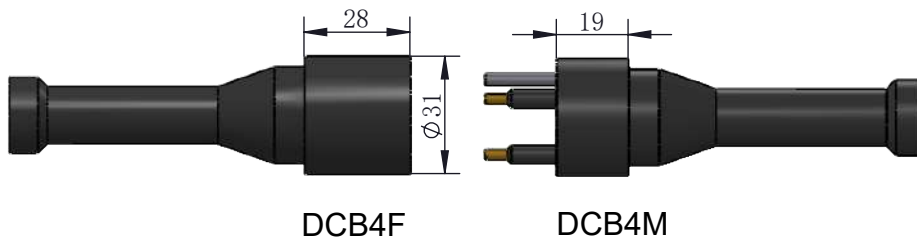
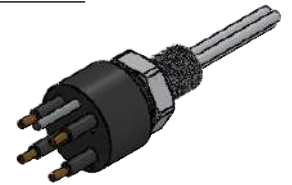
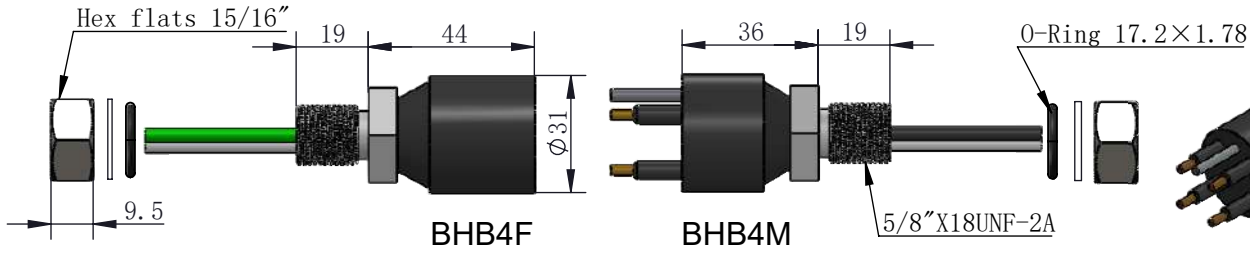
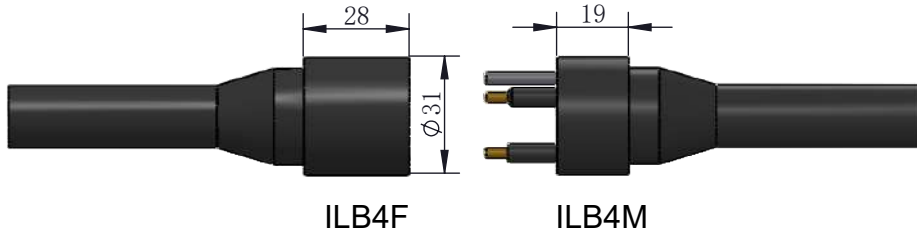
DLSC-M



Male Face View (12-25)

Specification:	Depth: 6000 meters	O ring: Nitrile
Number of cores: 12、16、25 core	Pressure-resistant water depth: 3000 meters	Locking cap: Polyoxymethylene
Wire cross-section(12、16Core): 1mm²	Wire Color:	Dimensions: mm
Electrical Characteristics: 600V@6-15Amp	White(with number label)	Thread: Imperial 3/4
Wire cross-section(25 Core): Pin3 is 1mm², other 0.5mm²		1 inch = 25.4 mm
Electrical Characteristics: 300V@3-15Amp	Materials:	
Contact resistance: <0.01Ω	Plug: Neoprene	Can be customized:
Insulation resistance: >200 MΩ	Socket: 316 stainless steel/ titanium alloy	1: Cable Length
Durability Life: >500 times	Pin: Gold-plated copper	2: Shell Material: stainless steel/ titanium alloy
Temperature: -4° ~ +60° C	Nut and gasket: Stainless steel	3: Screw length

High Current Series (2-4Pin B Type)



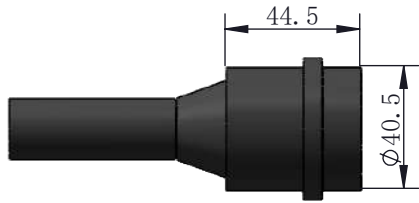
Male Face View

Specification:
Number of cores: 2, 3, 4 core
Wire cross-section(Plug): 4mm ²
Wire cross-section(Socket): 4mm ²
Electrical Characteristics: 600V@25-40Amp
Contact resistance: <0.01Ω
Insulation resistance: >200 MΩ
Durability Life: >500 times
Temperature: -4° ~ +60° C
Depth: 6000 meters

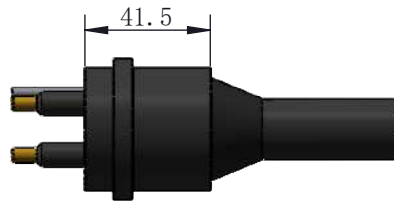
Pressure-resistant water depth: 3000 meters
Wire Color:
1black 2white 3red 4green
Materials:
Plug: Neoprene
Socket: 316 stainless steel/ titanium alloy
Pin: Gold-plated copper
Nut and gasket: Stainless steel
O ring: Nitrile

Locking cap: Polyoxymethylene
Elastic snap ring: Stainless steel
Dimensions: mm
Thread: Imperial
1 inch = 25.4 mm
Can be customized:
1: Cable Length
2: Shell Material: stainless steel/ titanium alloy
3: Screw length

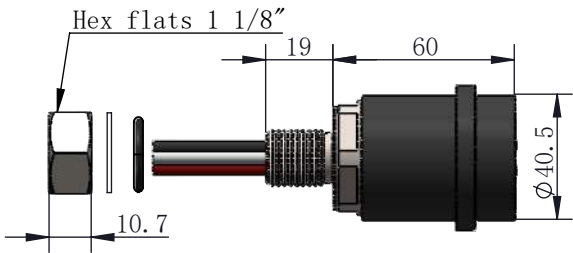
High Current Series (4Pin C Type)



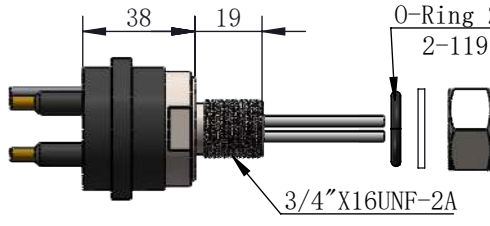
HPIL4F



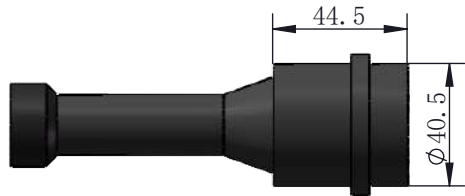
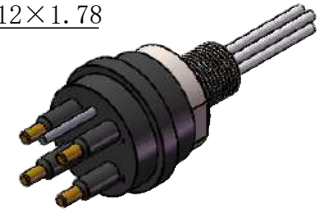
HPIL4M



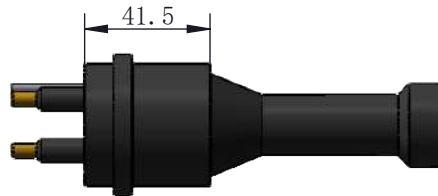
HPBH4F



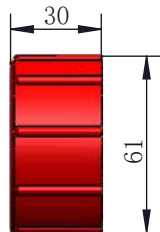
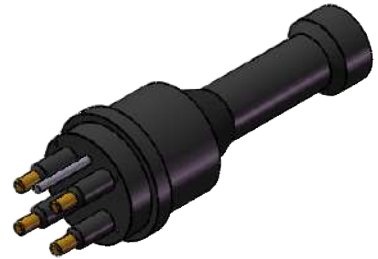
HPBH4M



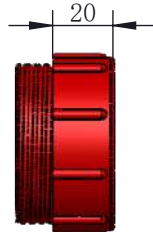
HPDC4F



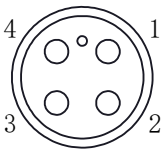
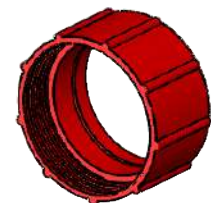
HPDC4M



DLSC-F



DLSC-M



Male Face View

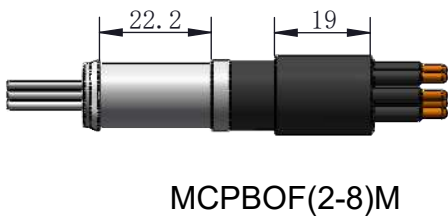
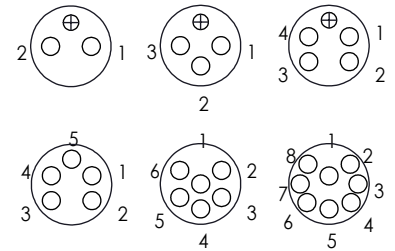
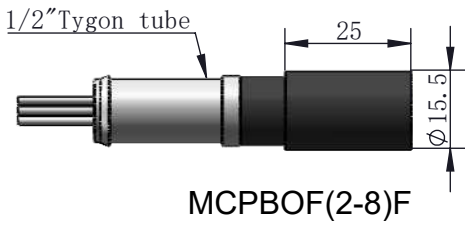
Specification:
Number of cores: 4 core
Wire cross-section(Plug): 6mm ²
Wire cross-section(Socket): 6mm ²
Electrical Characteristics: 600V@50Amp
Maximum Frequency: 3GHz
Contact resistance: <0.01Ω
Insulation resistance: >200 MΩ
Durability Life: >500 times
Temperature: -4° ~ +60° C

Depth: 6000 meters
Pressure-resistant water depth: 3000 meters
Wire Color:
1black 2white 3red 4green
Materials:
Plug: Neoprene
Socket: 316 stainless steel
Pin: Gold-plated copper
Nut and gasket: Stainless steel
O ring: Nitrile

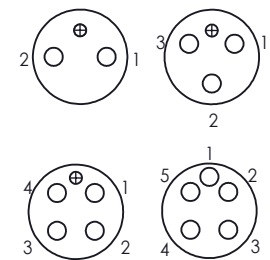
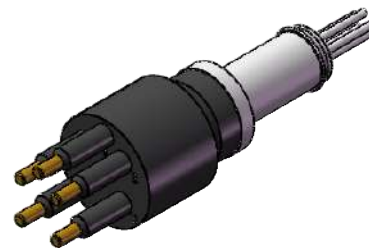
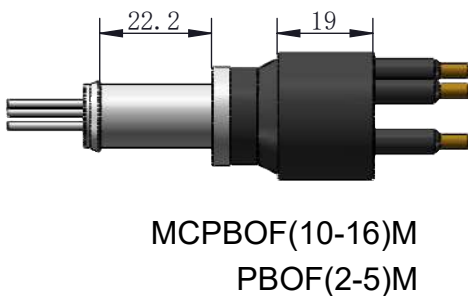
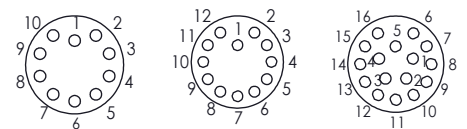
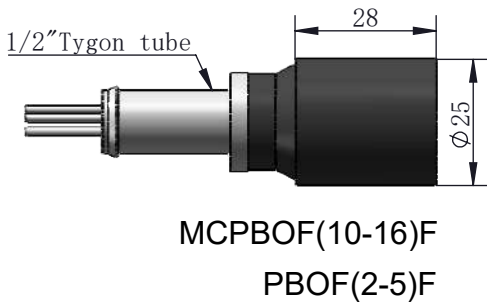
Locking cap: Polyoxymethylene
Elastic snap ring: Stainless steel
Dimensions: mm
Thread: Imperial
1 inch = 25.4 mm
Can be customized:
1: Cable Length
2: Shell Material: stainless steel/ titanium alloy
3: Screw length

Oil-filled Series

Micro circular Series (2-8Pin)



A Type Micro (10-16Pin), Standard(2-5Pin)



Specification:

Wire cross-section: 18AWG、20AWG

Electrical Characteristics: 300V、600V@3-10Amp

Contact resistance: <0.01Ω

Insulation resistance: >200 MΩ

Durability Life: >500 times

Temperature: -4° ~ +60° C

Depth: 6000 meters

Wire Color:

2-8 cores: 1black 2white 3red 4green 5orange

6blue 7white/black, purple 8 red/black, brown

Other cores: white (with number label)

Materials: Neoprene、 stainless steel/ titanium alloy

Pin: Gold-plated copper

Dimensions: mm

Thread: Imperial

1 inch = 25.4 mm

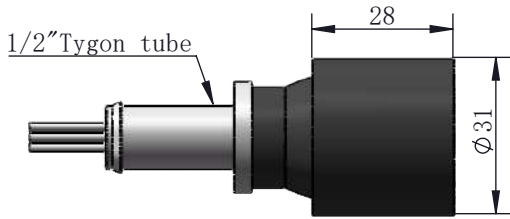
Can be customized:

1: Cable Length

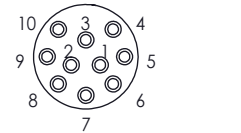
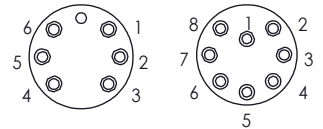
2: Shell Material: stainless steel/ titanium alloy

Oil-filled Series

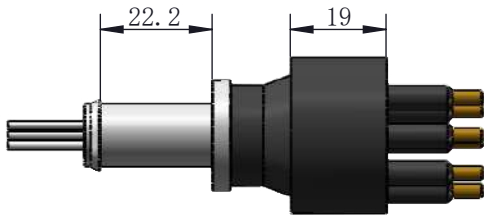
B Type Standard (6、8、10)Pin



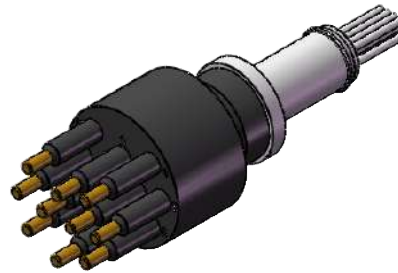
PBOF(6-10)F



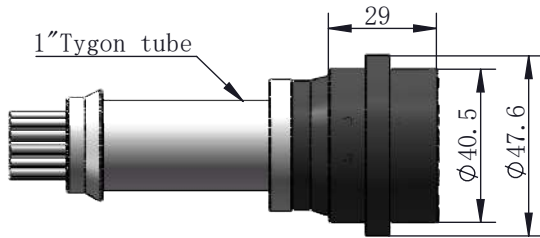
Male Face View



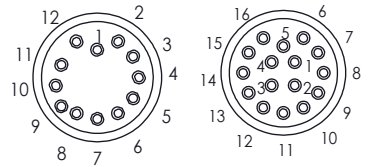
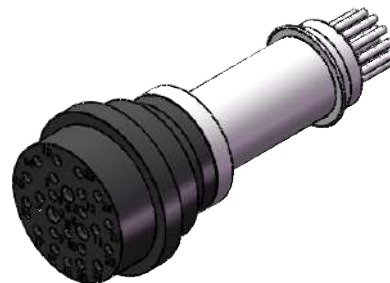
PBOF(6-10)M



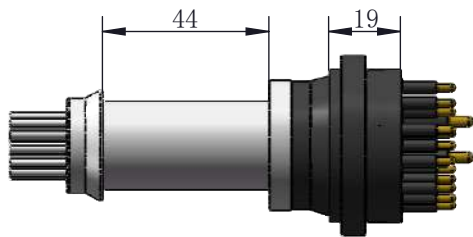
C Type Standard(12-25)pin



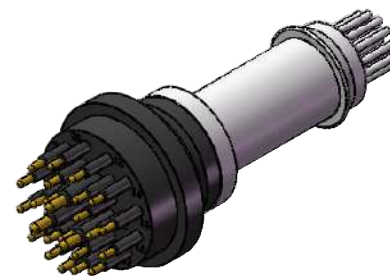
PBOF(12-25)F



Male Face View



PBOF(12-25)M



Specification:

Wire cross-section: 18AWG、20AWG

Electrical Characteristics: 300V、600V@3-10Amp

Contact resistance: <0.01Ω

Insulation resistance: >200 MΩ

Durability Life: >500 times

Temperature: -4° ~ +60° C

Depth: 6000 meters

Wire Color :

2-8 cores: 1black 2white 3red 4green 5orange

6blue 7white/black, purple 8 red/black, brown

Other cores: white (with number label)

Materials: Neoprene stainless steel/ titanium alloy

Pin: Gold-plated copper

Dimensions: mm

Thread: Imperial

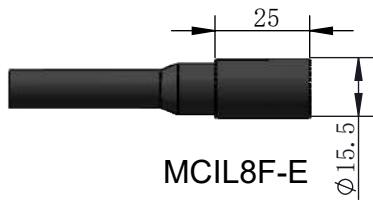
1 inch = 25.4 mm

Can be customized:

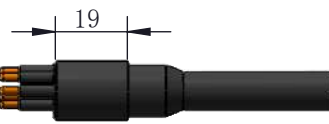
1: Cable Length

2: Shell Material: stainless steel/ titanium alloy

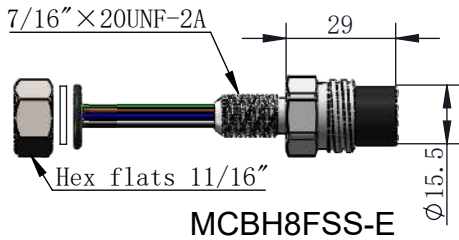
Micro Circular Network Series 8pin



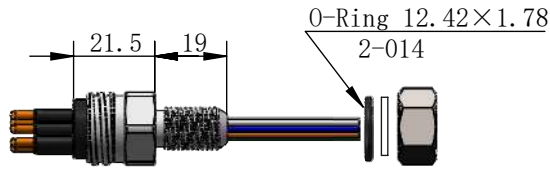
MCIL8F-E



MCIL8M-E



MCBH8FSS-E



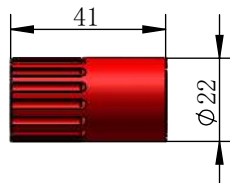
MCBH8MSS-E



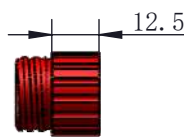
MCDC8F



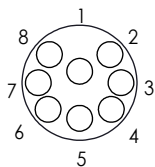
MCDC8M



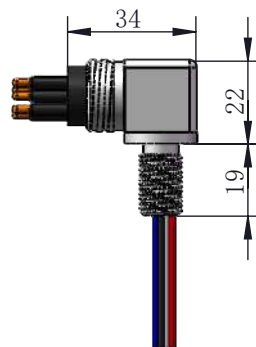
MCDLSF



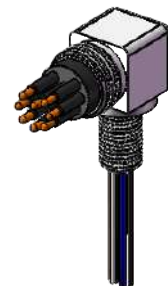
MCDLSM



Male Face View



MCBHRA8MSS-E



Specification:

Number of cores: 8 core
 01 overmolded cable (1m): 4X twisted pairs 24AWG(PUR)
 02 pigtail cable (1m): 4Xtwisted pairs 24AWG(CAT 5E)
 Electrical Characteristics:
 250VDCContact resistance: <0.01Ω
 Insulation resistance: >200 MΩ
 Durability Life: >500 times
 Temperature: -4° ~ +60° C
 Depth: 6000 meters

Wire Color:

1 Brown 2 Brown/White 3 Blue 4 Blue/White
 5 Orange 6 Orange/White 7 Green 8 Green/White

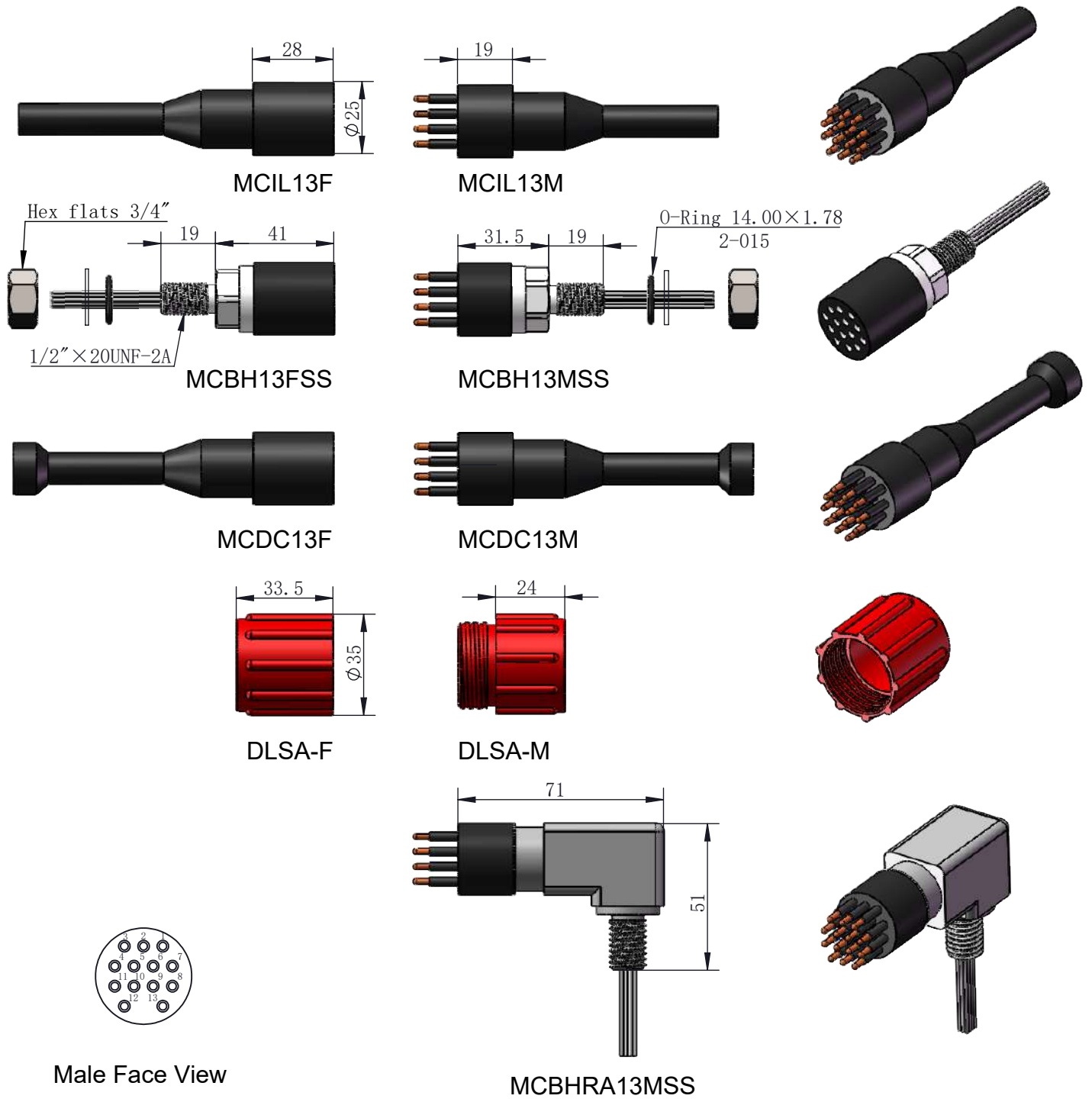
Materials:

Plug: Neoprene
 Socket: 316 stainless steel
 Pin: Gold-plated copper
 Nut and gasket: Stainless steel
 Locking cap: Polyoxymethylene

O ring: Nitrile

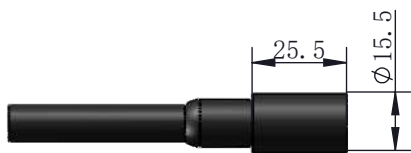
Elastic snap ring: Stainless steel
 Dimensions: mm
 Thread: Imperial 7/16
 1 inch = 25.4 mm
 Can be customized:
 1: Cable Length
 2: Shell Material: stainless steel/ titanium alloy
 3: Screw length

Micro Circular Network Series 13pin(A Type)



Specification:	Temperature: -4° ~ +60° C	Nut and gasket: Stainless steel
Number of cores: 13 core	Depth: 6000 meters	O ring: Nitrile
01 overmolded cable (1m): 4X twisted pairs 23AWG 4X18AWG Power Cable	Pressure-resistant water depth: 3000 meters	Locking cap: Polyoxymethylene
02 pigtail cable (1m): 4X twisted pairs 23AWG 4X18AWG Power Cable	Wire Color:	Dimensions: mm
Electrical Characteristics: 600VDC Data cable: 250VDC	1 black 2 shield 3 white 4 brown 5 brown/white 6 blue 7 blue/white	Thread: Imperial 1/2
Transmission rate: 1Gbit/s	8 orange 9 orange/white 10 green 11 green/white 12 red 13 green	1 inch = 25.4 mm
Contact resistance: <0.01Ω Insulation resistance: >200 MΩ	Materials:	Can be customized:
Durability Life: >500 times	Plug: Neoprene	1: Cable Length
	Socket: 316 stainless steel/ titanium alloy	2: Shell Material: stainless steel/ titanium alloy
	Pin: Gold-plated copper	3: Screw length

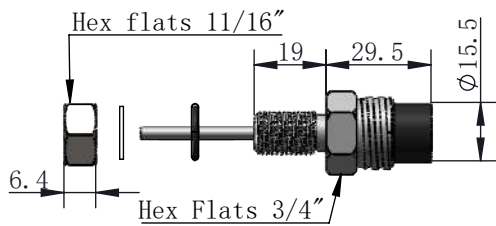
Micro circular coaxial connector 50Ω



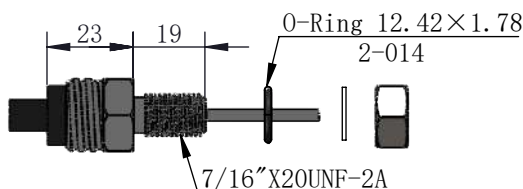
1501-50C-00



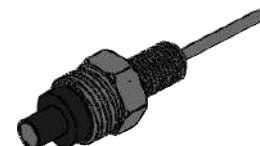
1501-50C-11



1502-50C-00



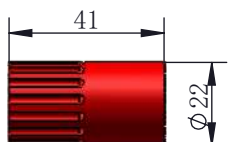
1502-50C-11



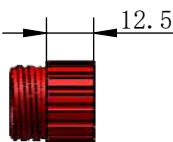
1503-50C-00



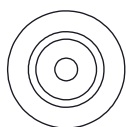
1503-50C-11



MCDLSF



MCDLSM



Male Face View

Specification: _____

Number of cores: 1 core _____

01 with overmolded cable (1m): RG400/316 50Ω PUR coaxial cable _____

02 with pigtail cable (1m): RG400/316 50Ω coaxial cable _____

RG400 cable loss: 0.88dB/m@3GHz _____

0.48dB/m@1GHz _____

0.30dB/m@400MHz _____

RG316 cable loss: 1.53dB/m@3GHz _____

0.86dB/m@1GHz _____

0.54dB/m@400MHz _____

Electrical parameters: 250VDC _____

Maximum operating frequency: 3GHz _____

Contact resistance: <0.01Ω _____

Insulation resistance: >200 MΩ _____

Durability Life: >500 times _____

Temperature: -4° ~ +60° C _____

Depth: 6000 meters _____

Pressure-resistant water depth: 3000 meters _____

Materials: _____

Plug: Neoprene _____

Socket: 316 stainless steel _____

Pin: Gold-plated copper _____

Nut and gasket: Stainless steel _____

'O' ring: Nitrile _____

Locking cap: Polyacetal _____

Elastic snap ring: Stainless steel _____

Dimensions: mm _____

Threads: Imperial _____

1 inch = 25.4 mm _____

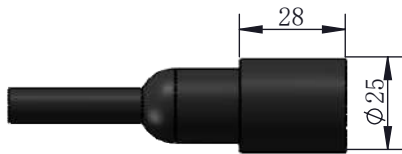
Can be customized: _____

1: Cable Length _____

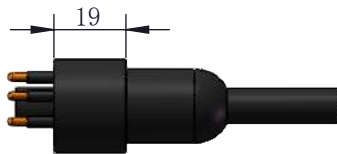
2: Shell Material: stainless steel/ titanium alloy _____

3: Screw length _____

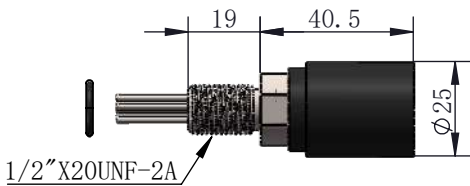
1 coaxial and 6 electric (A type)



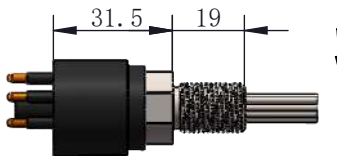
2501-1C6-00



2501-1C6-11



2502-1C6-00



2502-1C6-11

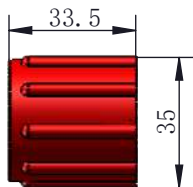
O-Ring 14.00×1.78
2-015



2503-1C6-00



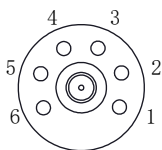
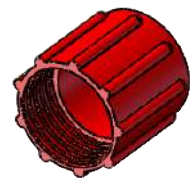
2503-1C6-11



DLSA-F



DLSA-M



Male Face View

Specification :

Number of cores: 6 core

01 overmolded cable (1m): RG179 75Ω PUR coaxial cable

02 with pigtail cable (1m): RG179 75Ω coaxial cable

Electrical Characteristics: 1.5 mm² wire; 300V@3Amp

Maximum Frequency: 3GHz

Cable loss: 0.27dB/m@100MHz

0.54dB/m@400MHz

0.87dB/m@1GHz

Contact resistance: <0.01Ω Insulation resistance: >200 MΩ

Durability Life: >500 times

Temperature: -4° ~ +60° C

Depth: 3000 meters

Wire Color:

1black 2white 3red 4green 5orange 6blue

Materials:

Plug: Neoprene

Socket: 316 stainless steel

Pin: Gold-plated copper

Nut and gasket: Stainless steel

O ring: Nitrile

Locking Sleeve: Polyoxymethylene

Elastic snap ring: Stainless steel

Dimensions: mm

Thread: Imperial

1 inch = 25.4 mm

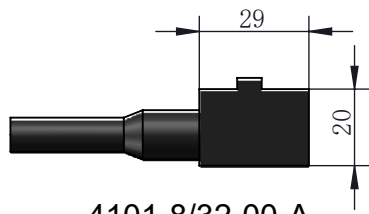
Can be customized:

1: Cable Length

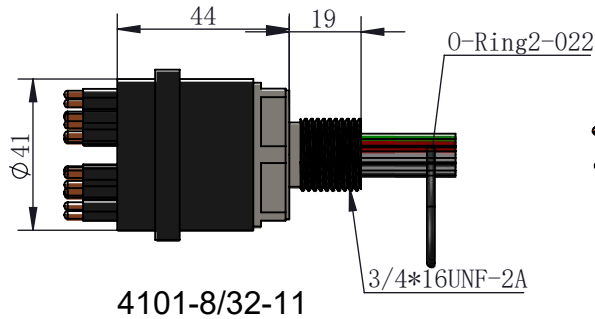
2: Shell Material: stainless steel/ titanium alloy

3: Screw length

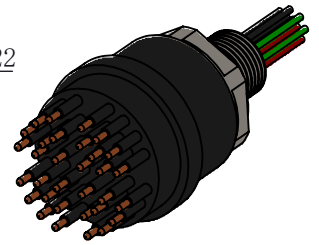
Circular Split-Petal Series (20-32 core C type)



4101-8/32-00-A
4101-8/32-00-B
4101-8/32-00-C
4101-8/32-00-D



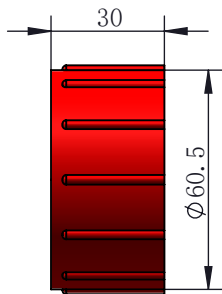
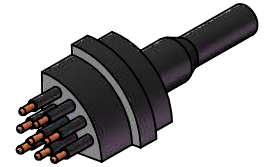
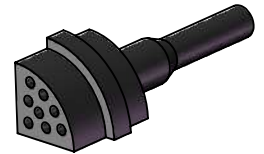
4101-8/32-11



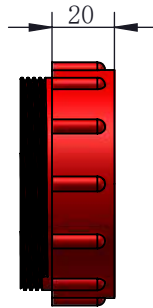
4103-8/32-00



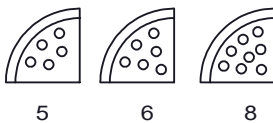
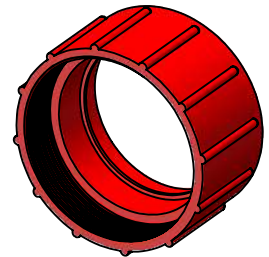
4103-8/32-11



DLSC-F



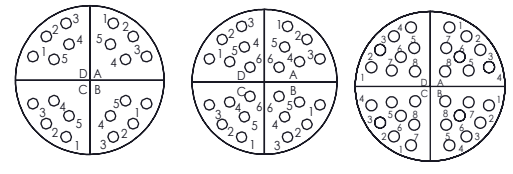
DLSC-M



5

6

8



5/20

6/24

8/32

Male Face View

Specification:

Number of cores: 20、24、32 core

Wire cross-section(Plug): 0.5mm²

Wire cross-section(Socket): 0.5mm²

Electrical Characteristics: 300V@3-5Amp

Contact resistance: <0.01Ω

Insulation resistance: >200 MΩ

Durability Life: >500 times

Temperature: -4° ~ +60° C

Depth: 6000 meters(600bar)

Socket Wire Color:

A: Black B: White C: Red D: Green

Plug Wire Color :

1black 2white 3red 4green 5orange 6blue 7purple 8brown

Materials :

Plug: Neoprene

Socket: 316 stainless steel/ titanium alloy

Pin: Gold-plated copper

Nut and gasket: Stainless steel

O ring: Nitrile Locking Sleeve: Polyoxymethylene

Dimensions: mm

Thread: Imperial 3/4

1 inch = 25.4 mm

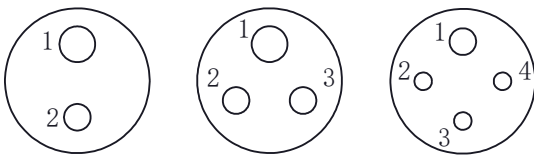
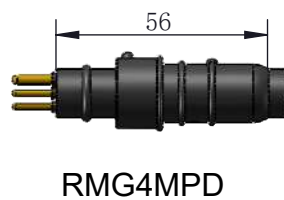
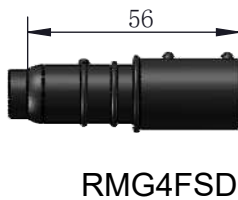
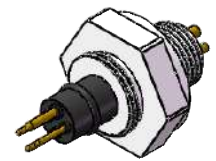
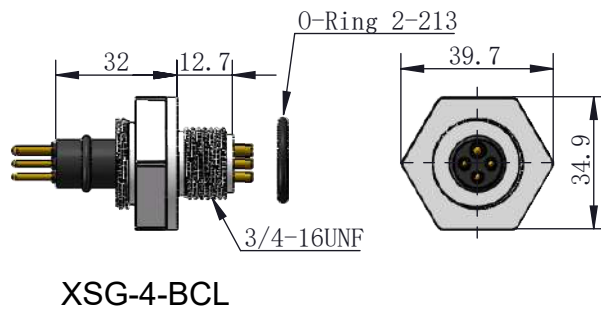
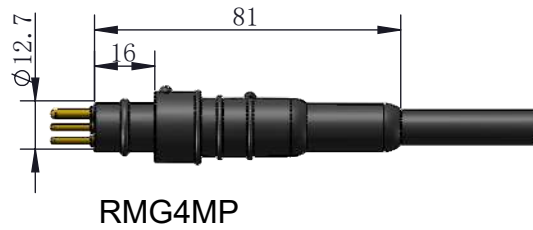
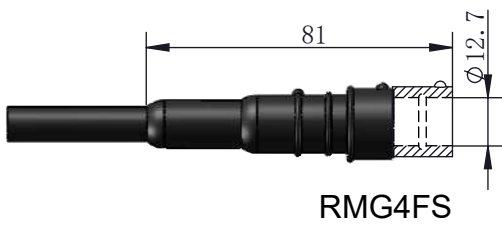
Can be customized:

1: Cable Length

2: Shell Material: stainless steel/ titanium alloy

3: Screw length

RM Series (2-4Pin)



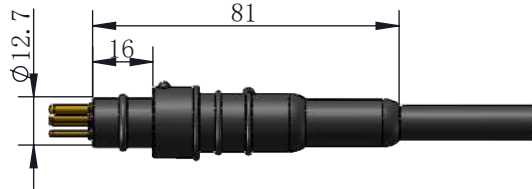
Male Face View: Anticlockwise(Female: Clockwise)

Specification :	Wire Color:	Dimensions: mm
Number of cores: 2、 3、 4 core	1 white 2 black 3 green 4 red	Thread: Imperial 3/4
Wire cross-section: 20AWG		1 inch = 25.4 mm
Electrical Characteristics: 300V@3-6Amp	Materials:	
Contact resistance: <0.01Ω	Plug: Neoprene	Can be customized:
Insulation resistance: >200 MΩ	Socket: 316 stainless steel/ titanium alloy	1: Cable Length
Durability Life: >500 times	Pin: Gold-plated copper	2: Shell Material: stainless steel/ titanium alloy
Temperature: -4° ~ +60° C	Nut and gasket: Stainless steel	3: Screw length
Depth: 6000 meters	O ring: Nitrile	
Pressure-resistant water depth: 3000 meters		

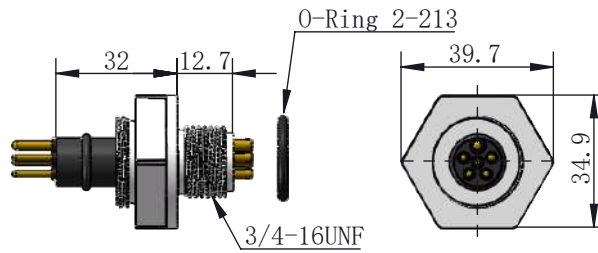
RM Series 6Pin



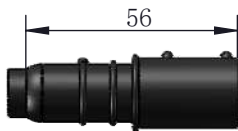
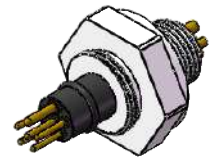
RMG6FS



RMG6MP



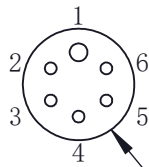
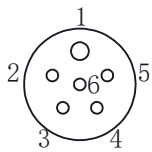
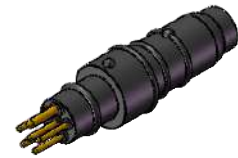
XSG-6-BCL



RMG6FSD



RMG6MPD



Customized, same with impulse

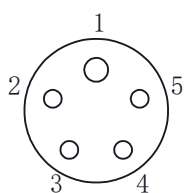
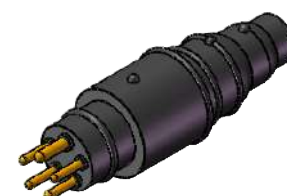
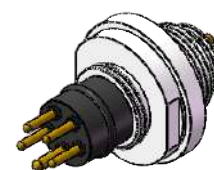
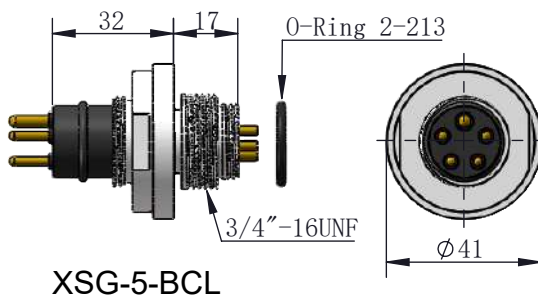
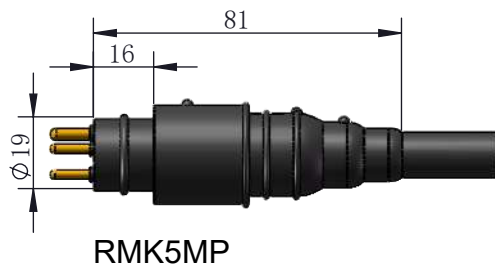
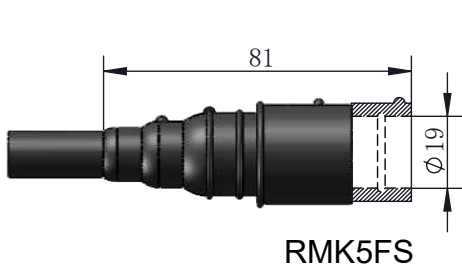
Male Face View: Anticlockwise(Female: Clockwise)

Specification:
Number of cores: 6 core
Wire cross-section: 20AWG
Electrical Characteristics: 300V@3-6Amp
Contact resistance: <0.01Ω
Insulation resistance: >200 MΩ
Durability Life: >500 times
Temperature: -4° ~ +60° C
Depth: 6000 meters
Pressure-resistant water depth: 3000 meters

Wire Color:
1 white 2 black 3 green 4 red 5 orange 6 blue
Materials:
Plug: Neoprene
Socket: 316 stainless steel/ titanium alloy
Pin: Gold-plated copper
Nut and gasket: Stainless steel
O ring: Nitrile

Dimensions: mm
Thread: Imperial 3/4
1 inch = 25.4 mm
Can be customized:
1: Cable Length
2: Shell Material: stainless steel/ titanium alloy
3: Screw length

RM Series 5Pin



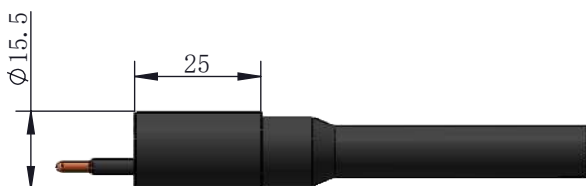
Male Face View: Anticlockwise
(Female: Clockwise)

Specification:
Number of cores: 5 core
Wire cross-section: 20AWG
Electrical Characteristics: 300V@3-6Amp
Contact resistance: <0.01Ω
Insulation resistance: >200 MΩ
Durability Life: >500 times
Temperature: -4° ~ +60° C
Depth: 6000 meters
Pressure-resistant water depth: 3000 meters

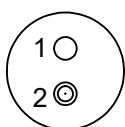
Wire Color:
1 white 2 black 3 green 4 red 5 orange
Materials:
Plug: Neoprene
Socket: 316 stainless steel/ titanium alloy
Pin: Gold-plated copper
Nut and gasket: Stainless steel
O ring: Nitrile

Dimensions: mm
Thread: Imperial 3/4
1 inch = 25.4 mm
Can be customized:
1: Cable Length
2: Shell Material: stainless steel/ titanium alloy
3: Screw length

Rubber Series 2Pin Male/Female



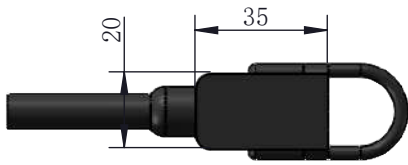
MCIL2F/M



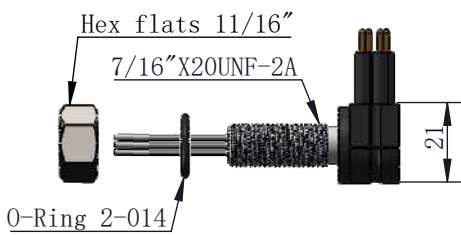
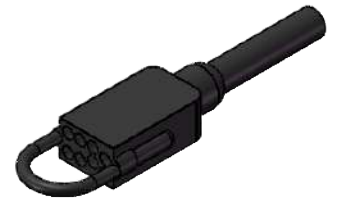
Male Face View

Specification:	Depth: 6000 meters	Dimensions: mm
Number of cores: 2 core	Temperature: -4° ~ +60° C	Thread: Imperial
Wire cross-section: 20AWG	Pressure-resistant water depth: 3000 meters	1 inch = 25.4 mm
Electrical Characteristics: 300V@3-6Amp		
Contact resistance: <0.01Ω	Materials: Neoprene	Can be customized:
Insulation resistance: >200 MΩ	Pin: Gold-plated copper	1: Cable Length
Durability Life: >500 times		

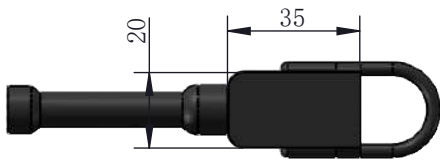
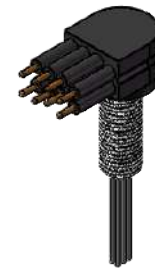
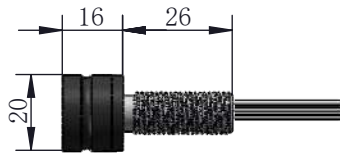
Self-locking Flat Series (6-8Pin)



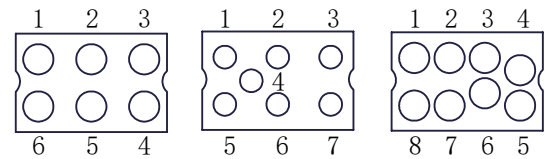
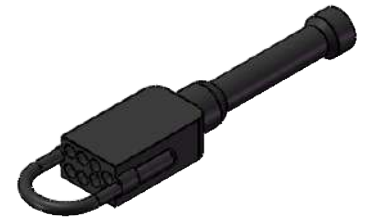
LPMIL8F



LPMBH8MP



LPMDC8F



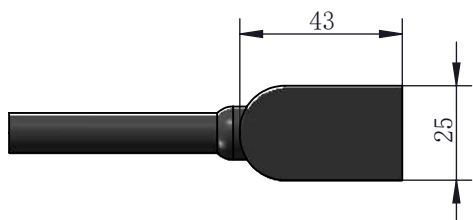
Male Face View

Specification:
Number of cores: 6、 7、 8
Cable Plug(60cm): 20AWG
BH with pigtail cable(30cm): 20AWG
Electrical Characteristics: 600V@3Amp
Contact resistance: <0.01Ω
Insulation resistance: >200 MΩ
Durability Life: >500 times
Temperature: -4° ~ +60° C
Depth: 6000 meters

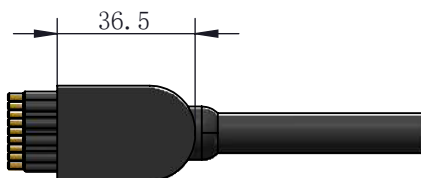
Pressure-resistant water depth: 3000 meters
Wire Color:
1black 2white 3red 4green 5orange
6blue 7white/black (purple) 8red/black (brown)
Materials: Neoprene
Socket: 316 stainless steel
Pin: Gold-plated copper

Nut and gasket: Stainless steel
O ring: Nitrile
Dimensions: mm
Thread: Imperial
1 inch = 25.4 mm
Can be customized:
1: Cable Length
2: Shell Material: stainless steel/ titanium alloy
3: Screw length

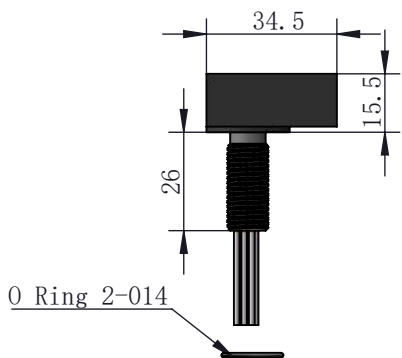
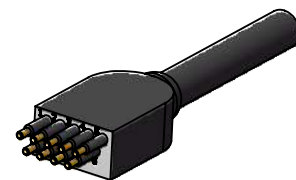
Micro Flat Angled Series (7-12Pin)



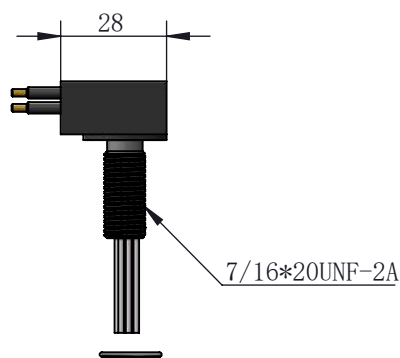
MCLPIL9F



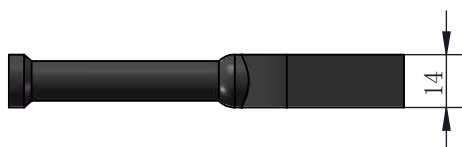
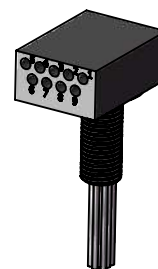
MCLPIL9M



MCLPBH12F



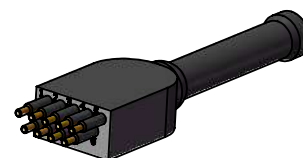
MCLPBH12M



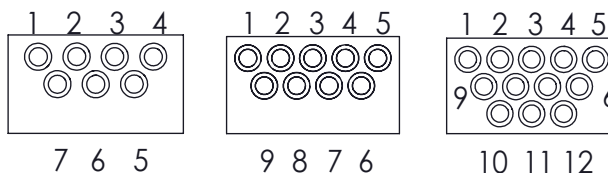
MCLPDC12F



MCLPDC12M



LPA STRAP



Male Face View

Specification:

Number of cores: 7、9、12

Cable Plug(60cm): 0.5mm² Wire

BH with pigtail cable(30cm): 0.5mm²

Electrical Characteristics: 300V@3-5Amp

Contact resistance: <0.01Ω

Insulation resistance: >200 MΩ

Durability Life: >500 times

Temperature: -4° ~ +60° C

Depth: 6000 meters

Wire Color:

White(with number label)

Materials:

Plug: Neoprene

Socket: 316 stainless steel/ titanium alloy

Pin: Gold-plated copper

Nut and gasket: Stainless steel

O ring: Nitrile

Locking ring: rubber

Dimensions: mm

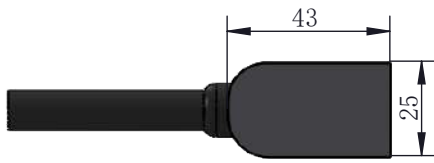
Thread: Imperial 7/16

Can be customized:

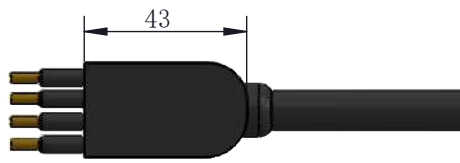
1: Cable Length

2: Shell Material: stainless steel/ titanium alloy

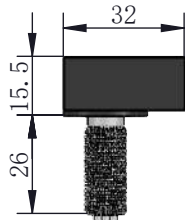
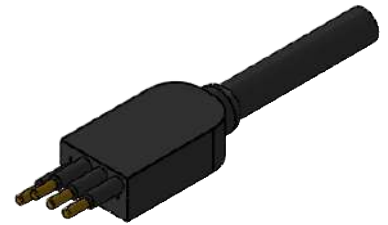
Standard Flat Angled Series (2-4Pin)



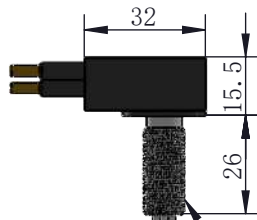
LPIL4F



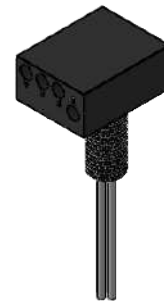
LPIL4M



LPBH4F



LPBH4M



O Ring 2-014

Hex flats 11/16"

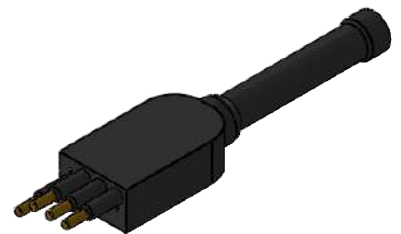
7/16"X20UNF-2A



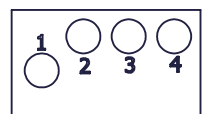
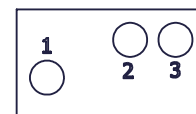
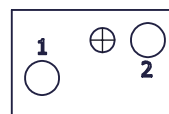
LPDC4F



LPDC4M



LPA STRAP



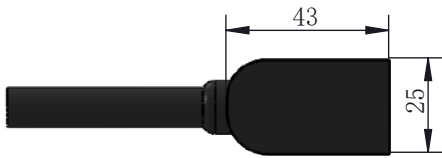
Male Face View

Specification: _____
 Number of cores: 2, 3, 4 core _____
 Cable Plug: 16AWG 1.34mm _____
 BH with pigtail cable: 18AWG 1.0mm² _____
 Electrical Characteristics: 500V@10Amp _____
 Contact resistance: <0.01Ω _____
 Insulation resistance: >200 MΩ _____
 Durability Life: >500 times _____
 Temperature: -4° ~ +60° C _____
 Depth: 6000 meters(600bar) _____

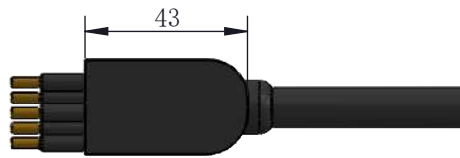
Wire Color: _____
 1black 2white 3red 4green _____
 Materials: _____
 Plug: Neoprene _____
 Socket: 316 stainless steel/ titanium alloy _____
 Pin: Gold-plated copper _____
 Nut and gasket: Stainless steel _____
 O ring: Nitrile _____
 Locking ring: rubber _____

Dimensions: mm _____
 Thread: Imperial 7/16 _____
 1 inch = 25.4 mm _____
 Can be customized: _____
 1: Cable Length _____
 2: Shell Material: stainless steel/ titanium alloy _____
 3: Screw length _____

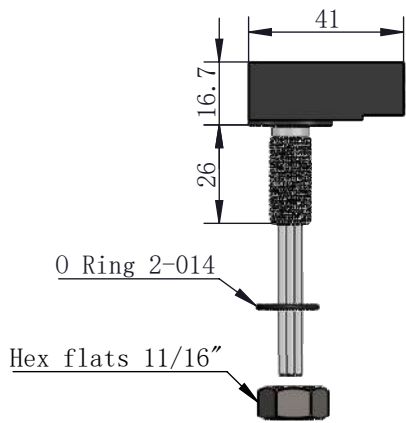
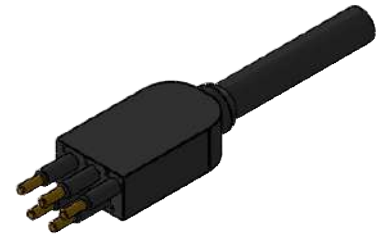
Standard Flat Angled Series (5Pin)



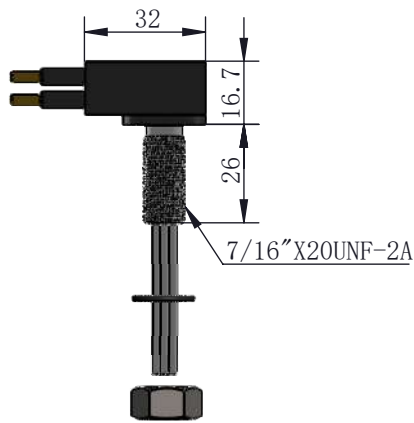
LPIL5F



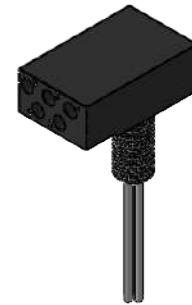
LPIL5M



LPBH5F



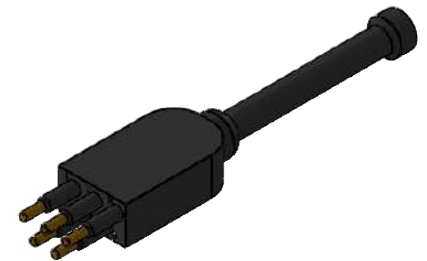
LPBH5M



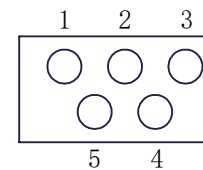
LPDC5F



LPDC5M



LPA STRAP



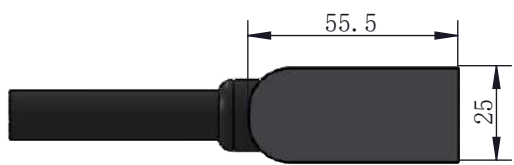
Male Face View

Specification:
Number of cores: 5 core
Cable Plug(60cm): 18AWG
BH with pigtail cable(30cm): 18AWG
Electrical Characteristics: 500V@6Amp
Contact resistance: <0.01Ω
Insulation resistance: >200 MΩ
Durability Life: >500 times
Temperature: -4° ~ +60° C
Depth: 6000 meters(600bar)

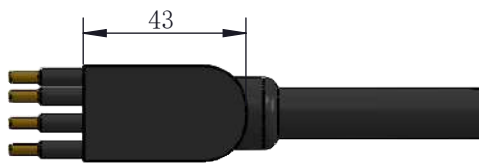
Wire Color:
1black 2white 3red 4green 5orange
Materials:
Plug: Neoprene
Socket: 316 stainless steel/ titanium alloy
Pin: Gold-plated copper
Nut and gasket: Stainless steel
O ring: Nitrile
Locking ring: rubber

Dimensions: mm
Thread: Imperial 7/16
1 inch = 25.4 mm
Can be customized:
1: Cable Length
2: Shell Material: stainless steel/ titanium alloy
3: Screw length

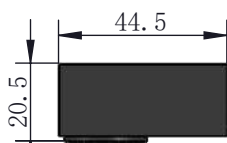
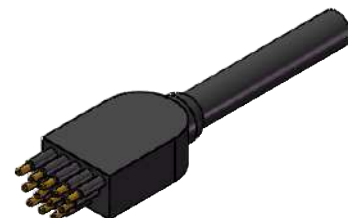
Standard Flat Angled Series (7Pin)



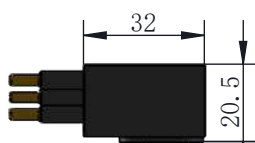
LPIL7F



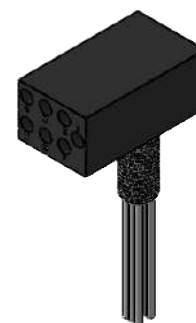
LPIL7M



LPBH7F



LPBH7M



O Ring 2-014

Hex flats 11/16"

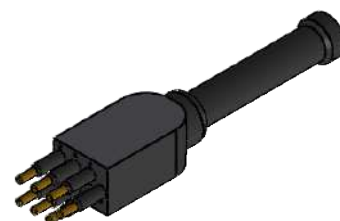
7/16" X20UNF-2A



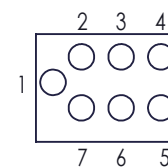
LPDC7F



LPDC7M



LPA STRAP



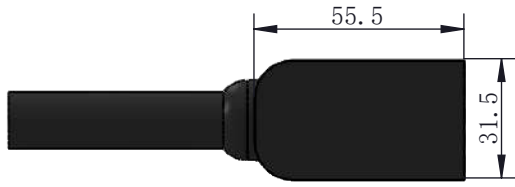
Male Face View

Specification:
Number of cores: 7core
Cable Plug(60cm): 18AWG
BH with pigtail cable(30cm): 18AWG
Electrical Characteristics: 500V@6Amp
Contact resistance: <0.01Ω
Insulation resistance: >200 MΩ
Durability Life: >500 times
Temperature: -4° ~ +60° C
Depth: 6000 meters(600bar)

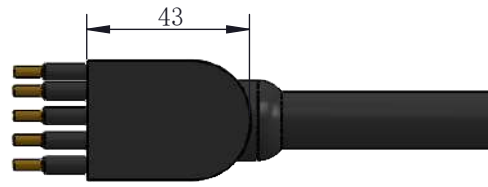
Wire Color:
1black 2white 3red 4green
5 orange 6 blue 7 white/black (purple)
Materials:
Plug: Neoprene
Socket: 316 stainless steel/ titanium alloy
Pin: Gold-plated copper
Nut and gasket: Stainless steel
O ring: Nitrile
Locking ring: rubber

Dimensions: mm
Thread: Imperial 7/16
1 inch = 25.4 mm
Can be customized:
1: Cable Length
2: Shell Material: stainless steel/ titanium alloy
3: Screw length

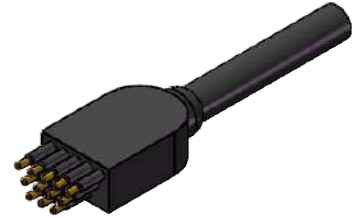
Standard Flat Angled Series (9Pin)



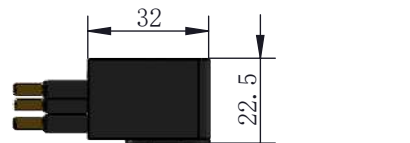
LPIL9F



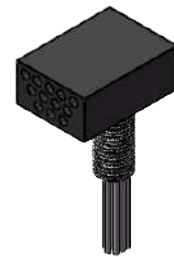
LPIL9M



LPBH9F



LPBH9M



O Ring 2-014
Hex flats 11/16"

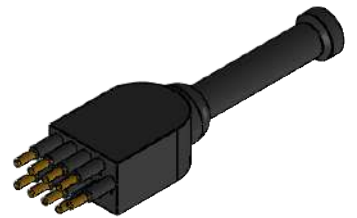
7/16" X 20UNF-2A



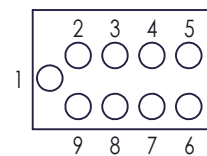
LPDC9F



LPDC9M



LPA STRAP



Male Face View

Specification:

Number of cores: 9core

Cable Plug(60cm): 18AWG

BH with pigtail cable(30cm): 4Pair Twist pair 18AWG

Electrical Characteristics: 500V@6Amp

Contact resistance: <0.01Ω

Insulation resistance: >200 MΩ

Durability Life: >500 times

Temperature: -4° ~ +60° C

Depth: 6000 meters(600bar)

Wire Color:

1black 2white 3red 4green 5orange

6blue 7white/black 8red/black 9green/black

Materials:

Plug: Neoprene

Socket: 316 stainless steel/ titanium alloy

Pin: Gold-plated copper

Nut and gasket: Stainless steel

O ring: Nitrile

Locking ring: rubber

Dimensions: mm

Thread: Imperial 7/16

1 inch = 25.4 mm

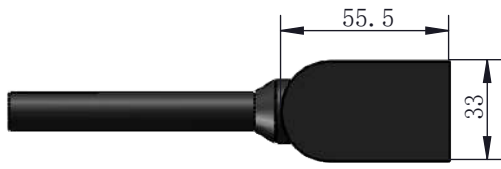
Can be customized:

1: Cable Length

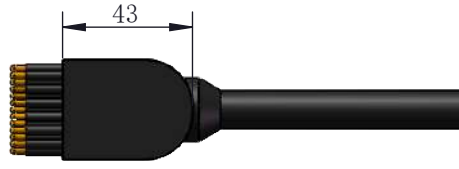
2: Shell Material: stainless steel/ titanium alloy

3: Screw length

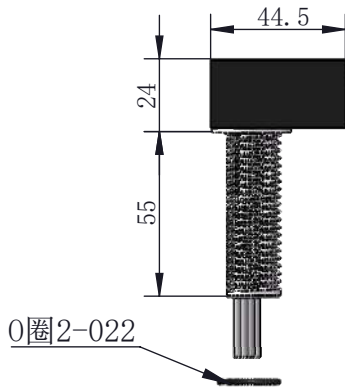
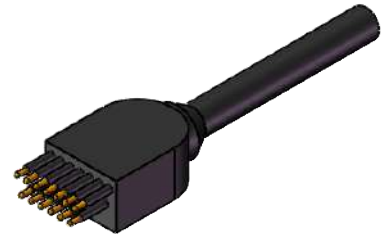
Standard Flat Angled Series (13Pin)



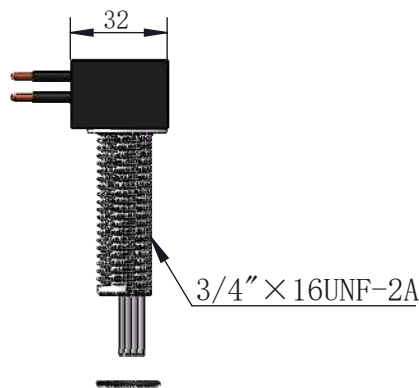
LPIL13F



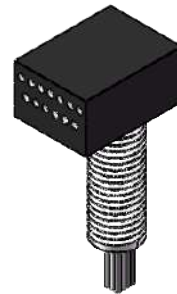
LPIL13F



LPIL13F



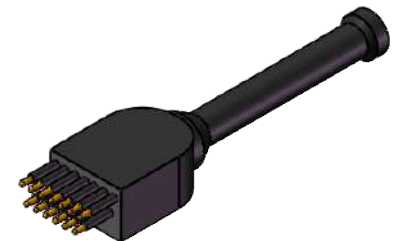
LPIL13F



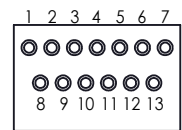
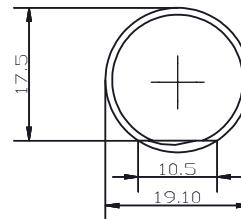
LPIL13F



LPIL13F



LPB STRAP



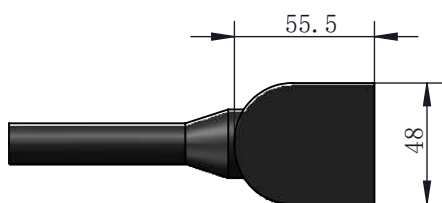
Male Face View

Specification: _____
 Number of cores: 13 core _____
 Cable Plug(60cm): 1mm² Wire _____
 BH with pigtail cable((30cm): 1mm² _____
 Electrical Characteristics: 300V@10Amp _____
 Contact resistance: <0.01Ω _____
 Insulation resistance: >200 MΩ _____
 Durability Life: >500 times _____
 Temperature: -4° ~ +60° C _____
 Depth: 6000 meters(600bar) _____

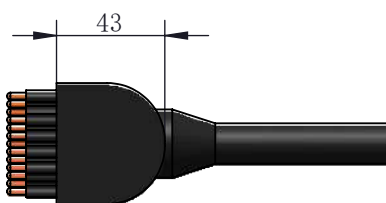
Pressure-resistant water depth: 3000 meters _____
 Wire Color: _____
 White(with number label) _____
 Materials: _____
 Plug: Neoprene _____
 Socket: 316 stainless steel/ titanium alloy _____
 Pin: Gold-plated copper _____
 Nut and gasket: Stainless steel _____

O ring: Nitrile _____
 Locking ring: rubber _____
 Dimensions: mm _____
 Thread: Imperial 3/4 _____
 Can be customized: _____
 1: Cable Length _____
 2: Shell Material: stainless steel/ titanium alloy _____

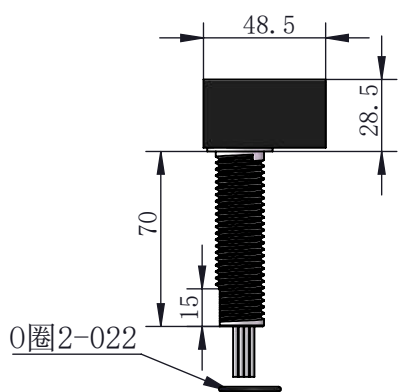
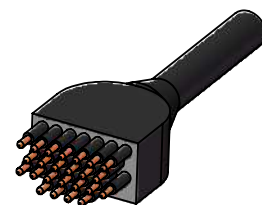
Standard Flat Angled Series (24Pin)



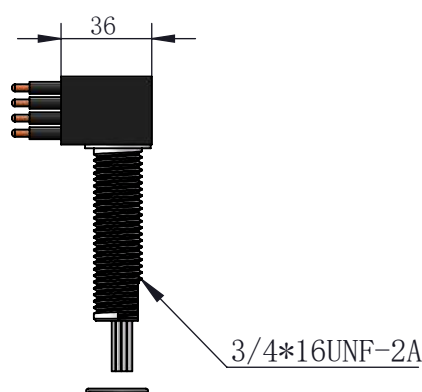
LPIL24F



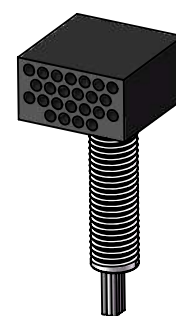
LPIL24M



LPBH24F



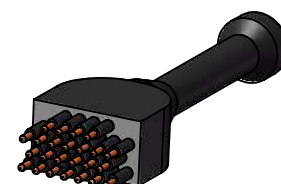
LPBH24M



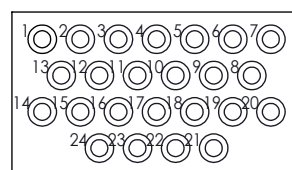
LPDC24F



LPDC24M



LPB STRAP



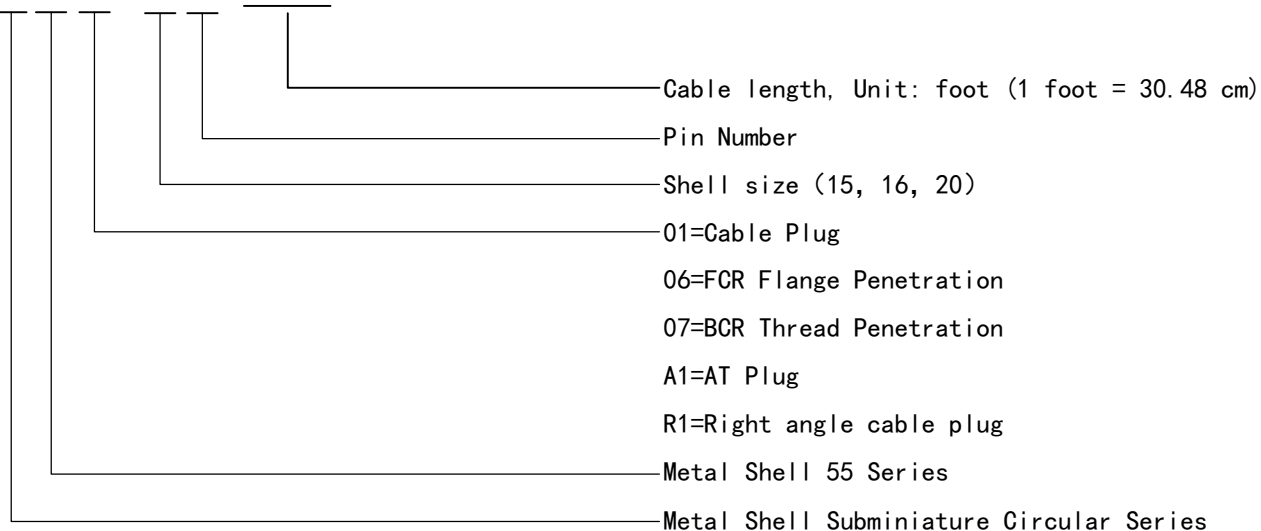
Male Face View

Specification:
 Number of cores: 24 core
 Cable Plug(60cm): 1mm² Wire (1 core: 0.5mm²)
 BH with pigtail cable(30cm):1mm² (1 core: 0.5mm²)
 Electrical Characteristics: 300V@10Amp
 Contact resistance: <0.01Ω
 Insulation resistance: >200 MΩ
 Durability Life: >500 times
 Temperature: -4° ~ +60° C
 Depth: 6000 meters(600bar)

Wire Color:
 White(with number label)
Materials:
 Plug: Neoprene
 Socket: 316 stainless steel/ titanium alloy
 Pin: Gold-plated copper
 Nut and gasket: Stainless steel
 O ring: Nitrile
 Locking ring: rubber

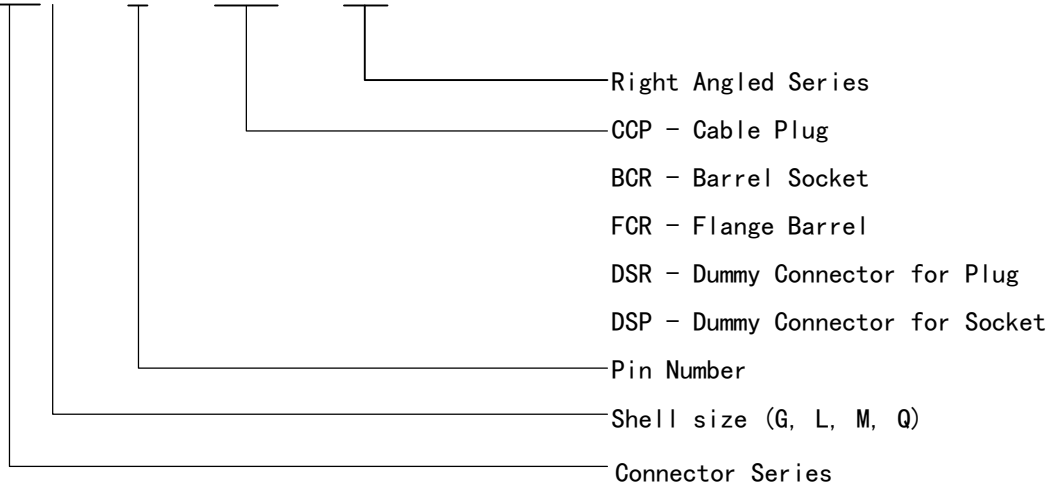
Dimensions: mm
 Thread: Imperial 3/4
 Can be customized:
 1: Cable Length
 2: Shell Material: stainless steel/ titanium alloy

IE5501-1508-0001



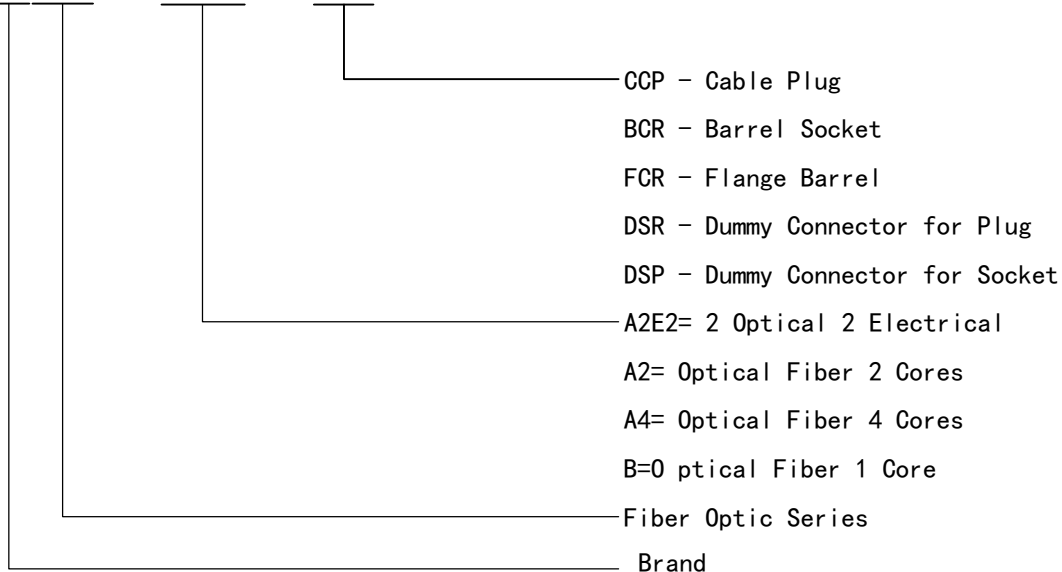
Metal Shell High Voltage Series

MSSG - 2 - CCP - RA

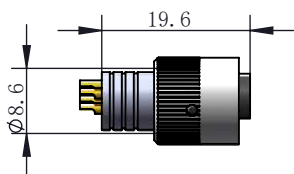


Fiber Optic Series

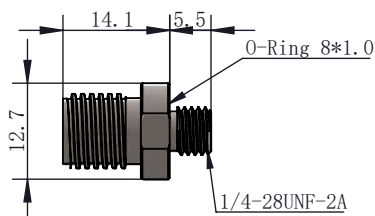
LHOPT - A2E2 - CCP



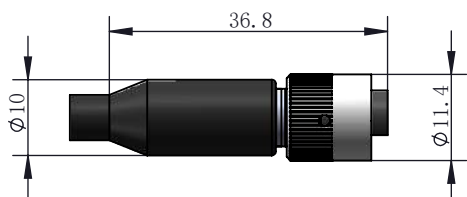
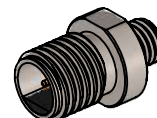
IE55-1506



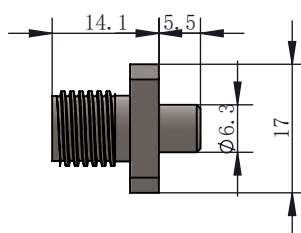
IE55-1506-AT



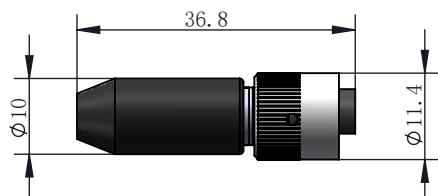
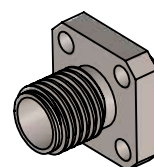
IE55-1506-BCR



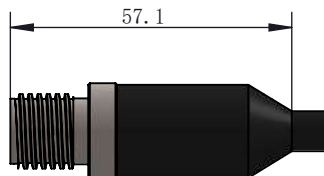
IE55-1506-CCP



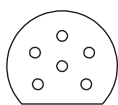
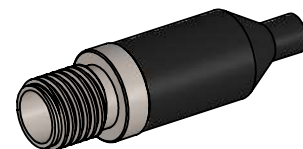
IE55-1506-FCR



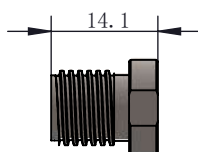
IE55-1506-DSP



IE55-1506-CCR



Male Face View



IE55-1506-DSR



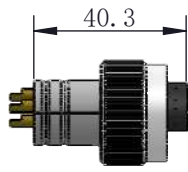
Specification:
Number of cores: 6 core
Wire cross-section: 0.3mm ²
Electrical Characteristics: 200V@1Amp
Contact resistance: <0.01Ω
Insulation resistance: >200 MΩ
Durability Life: >500 times
Temperature: -4° ~ +60° C
Depth: 6000 meters(600bar)

Wire Color:
1black 2white 3red 4green 5orange 6blue
Materials:
Plug: Neoprene
Socket: 316 stainless steel/ titanium alloy
Pin: Gold-plated copper
Nut and gasket: Stainless steel Locking Sleeve: Stainless steel
O ring: Nitrile

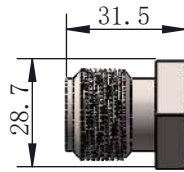
Dimensions: mm
Thread: Imperial 1/4
1 inch = 25.4 mm
Can be customized: :
1: Cable Length
2: Shell Material: stainless steel/ titanium alloy
3: Screw length

Renhotec-industrial.com

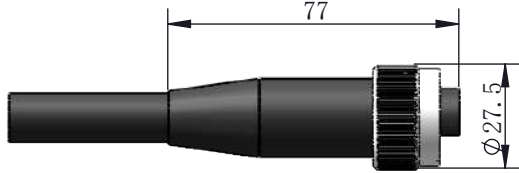
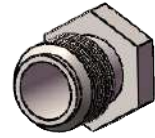
Metal shell 55 series (3-8 cores)



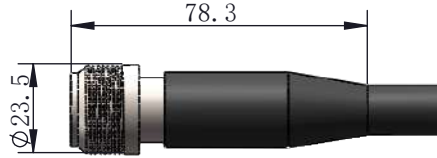
55A1-1508



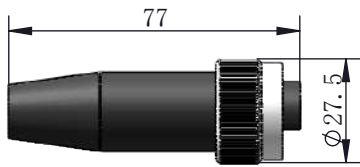
5507-1500



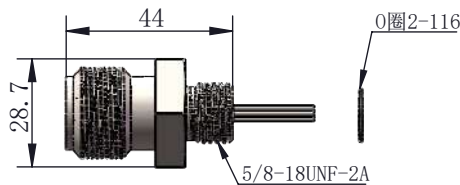
5501-1508-0002



5502-1508-0002



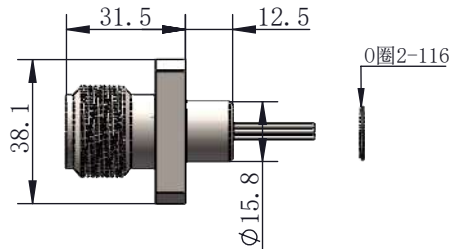
5501-1508-0000



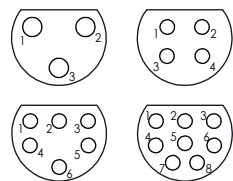
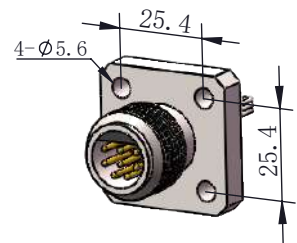
5507-1508-0001



55R1-1508-0002



5506-1508-0001



Male Face View

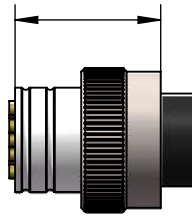


Specification:
 Number of cores: 3、4、6、8 core
 Wire cross-section(Plug/Socket): 1mm²
 Electrical Characteristics: 500V@5-9Amp 18AWG
 Contact resistance:<0.01Ω
 Insulation resistance: >200 MΩ
 Durability Life: >500 times
 Temperature: -4° ~ +60° C
 Depth: 6000 meters(600bar)

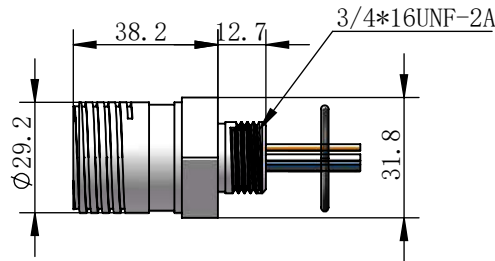
Wire Color:
 1black 2white 3red 4green
 5桔 6蓝 7白/黑、紫 8红/黑、棕
Socket Wire Color: White
Materials:
 Plug: Neoprene
 Socket: 316 stainless steel/ titanium alloy
 Pin: Gold-plated copper
 Nut and gasket: Stainless steel

O ring: Nitrile
Locking Sleeve: 316 Stainless steel
Thread: Imperial
Dimensions: mm
 1 inch = 25.4 mm
Can be customized:
 1: Cable Length
 2: Shell Material: stainless steel/ titanium alloy
 3: Screw length

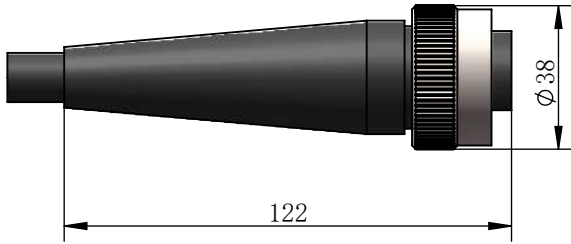
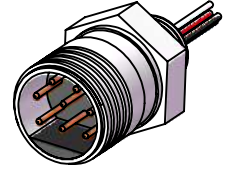
Metal shell 55 series (8, 13 cores)



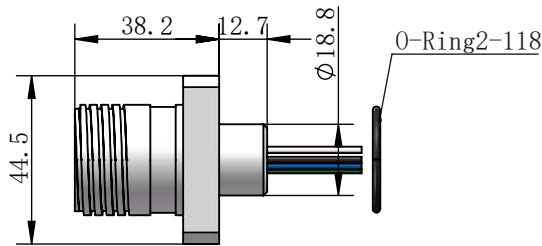
55A1-2008



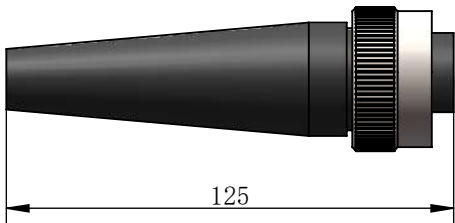
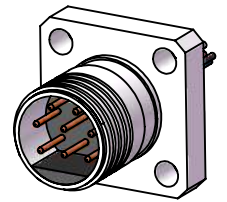
5507-2008-0001



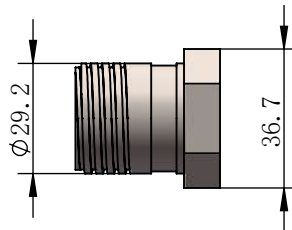
5501-2008-0002



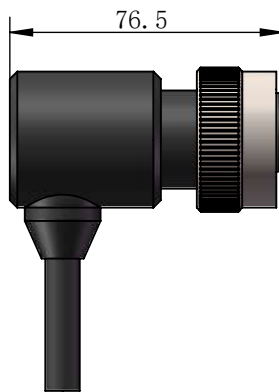
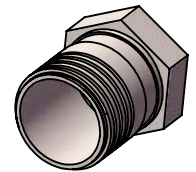
5506-2008-0001



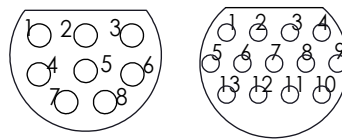
5501-2008-0000



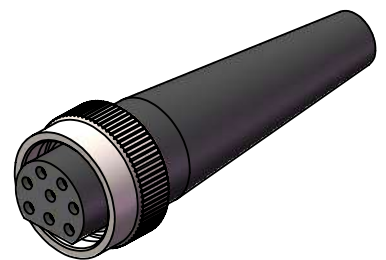
5507-2000



55R1-2008-0000



Male Face View



Specification:

Number of cores: 8, 13 core

8芯 : 500V@10-20Amp (单芯1.5平) 16AWG

13 Core : 500V@6-10Amp (Single Core) 18AWG

(Power supply + network cable) optional

Contact resistance: <0.01Ω

Insulation resistance: >200 MΩ

Durability Life: >500 times

Temperature: -4° ~ +60° C

Depth: 6000 meters(600bar)

Wire Color:

8 cores: 1 black 2 white 3 red 4 green 5 orange 6 blue

7 White/Black, Purple; 8 Red/Black, Brown

13 Core: White (with number label)

Materials:

Plug: Neoprene

Socket: 316 stainless steel/ titanium alloy

Pin: Gold-plated copper

Nut and gasket: Stainless steel ; Locking Sleeve: Stainless steel

O ring: Nitrile

Dimensions: mm

Thread: Imperial 3/4

1 inch = 25.4 mm

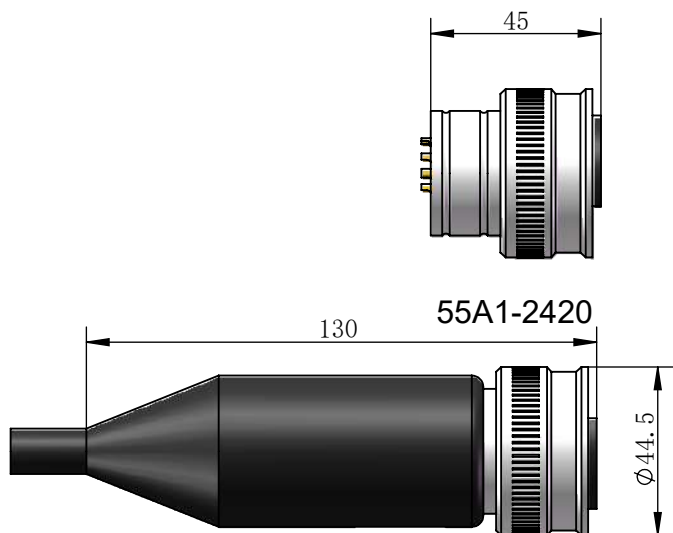
Can be customized:

1: Cable Length

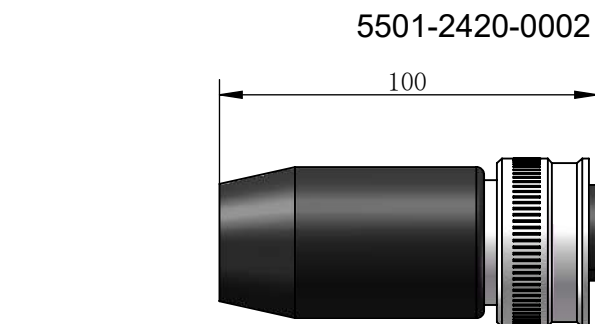
2: Shell Material: stainless steel/ titanium alloy

3: Screw length

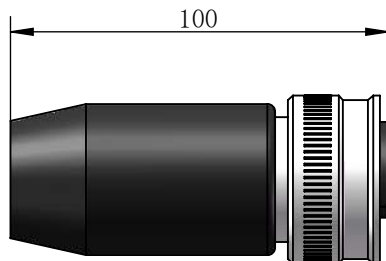
Renhotec-industrial.com Metal shell 55 series (20 cores)



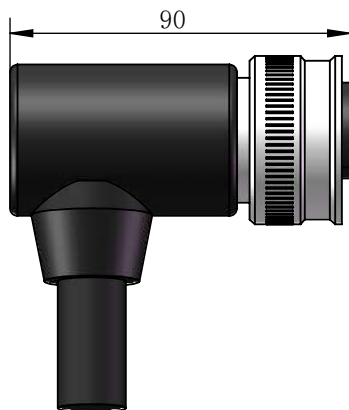
55A1-2420



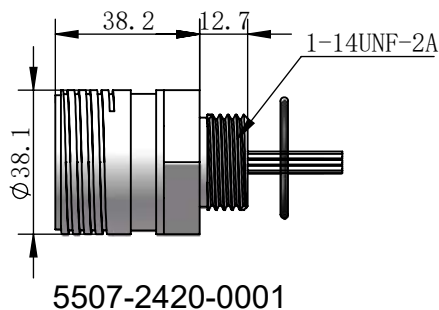
5501-2420-0002



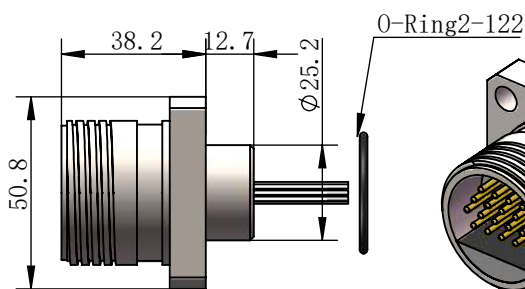
5501-2420-0000



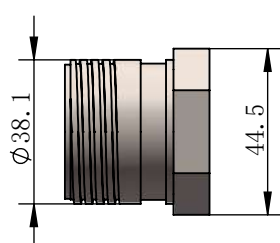
55R1-2420-0002



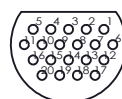
5507-2420-0001



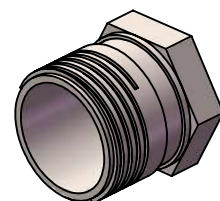
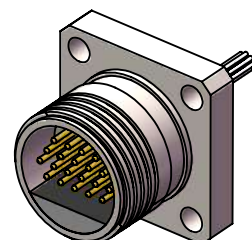
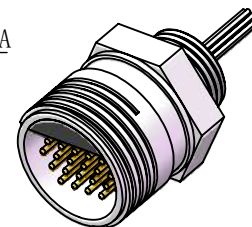
5506-2420-0001



5507-2420



Male Face View

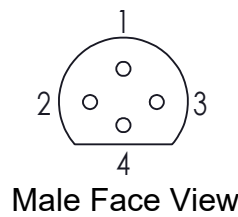
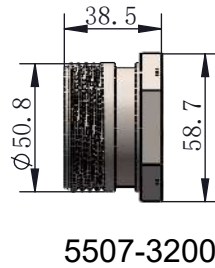
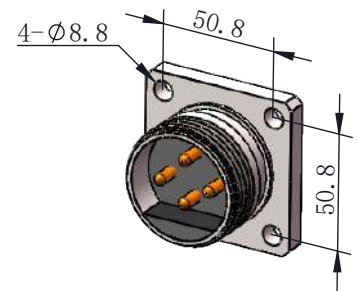
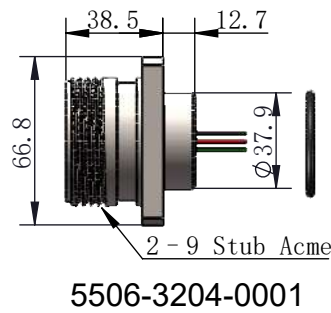
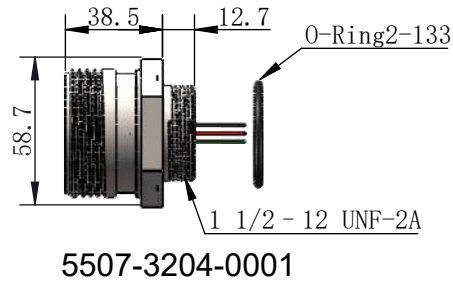
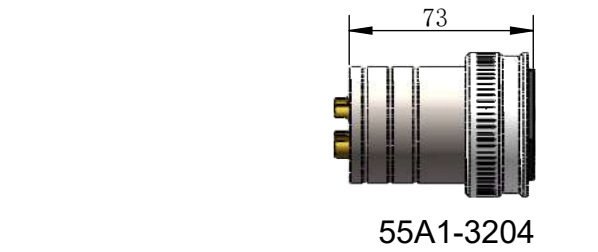


Specification:
Number of cores: 20 core
Wire cross-section(Plug): 1mm ²
Wire cross-section(Socket): 1mm ²
Electrical Characteristics: 500V@6-10Amp
Contact resistance: <0.01Ω
Insulation resistance: >200 MΩ
Durability Life: >500 times
Temperature: -4° ~ +60° C
Depth: 6000 meters(600bar)

Wire Color:
White(with number label)
Materials:
Plug: Neoprene
Socket: 316 stainless steel/ titanium alloy
Pin: Gold-plated copper
Nut and gasket: Stainless steel
O ring: Nitrile
Locking Sleeve: Polyoxymethylene

Dimensions: mm
Thread: Imperial 1"
1 inch = 25.4 mm
Can be customized:
1: Cable Length
2: Shell Material: stainless steel/ titanium alloy
3: Screw length

Metal shell high voltage 4 core



Specification: _____
 Number of cores: 4 core _____
 Wire cross-section(Plug): 8mm² _____
 Wire cross-section(Socket): 8mm² _____
 Electrical Characteristics: 3000V@50Amp _____
 Contact resistance: <0.01Ω _____
 Insulation resistance: >200 MΩ _____
 Durability Life: >500 times _____
 Temperature: -4° ~ +60° C _____
 Depth: 6000 meters(600bar) _____

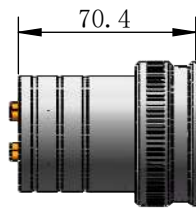
Wire Color: _____
 1black 2white 3red 4green _____

 Materials: _____
 Plug: Neoprene _____
 Socket: 316 stainless steel/ titanium alloy _____
 Pin: Gold-plated copper _____
 Nut and gasket: Stainless steel _____
 O ring: Nitrile _____
 Locking Sleeve: Stainless steel _____

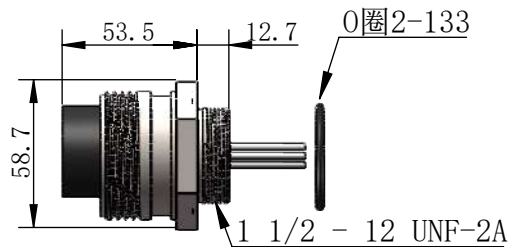
Dimensions: mm _____
 Thread: Imperial 1/2 _____
 1 inch = 25.4 mm _____

 Can be customized: _____
 1: Cable Length _____
 2: Shell Material: stainless steel/ titanium alloy _____
 3: Screw length _____

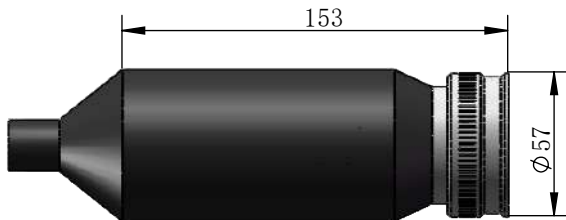
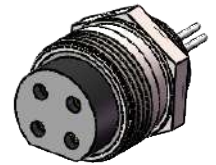
Metal Shell 66 Series 4 Cores



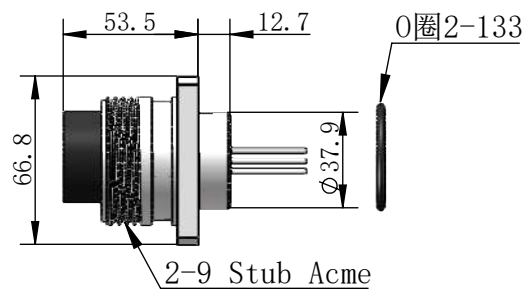
66A1-3204



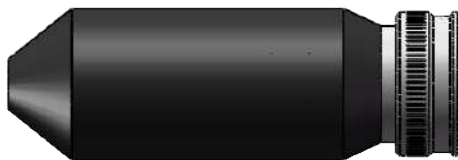
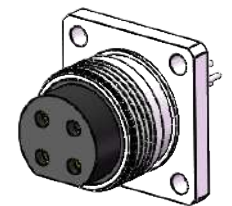
6607-3204-0001



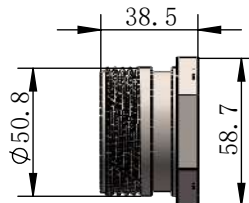
6601-3204-0002



6606-3204-0001



6601-3204-0000



6607-3200



66R1-3204-0000



Male Face View

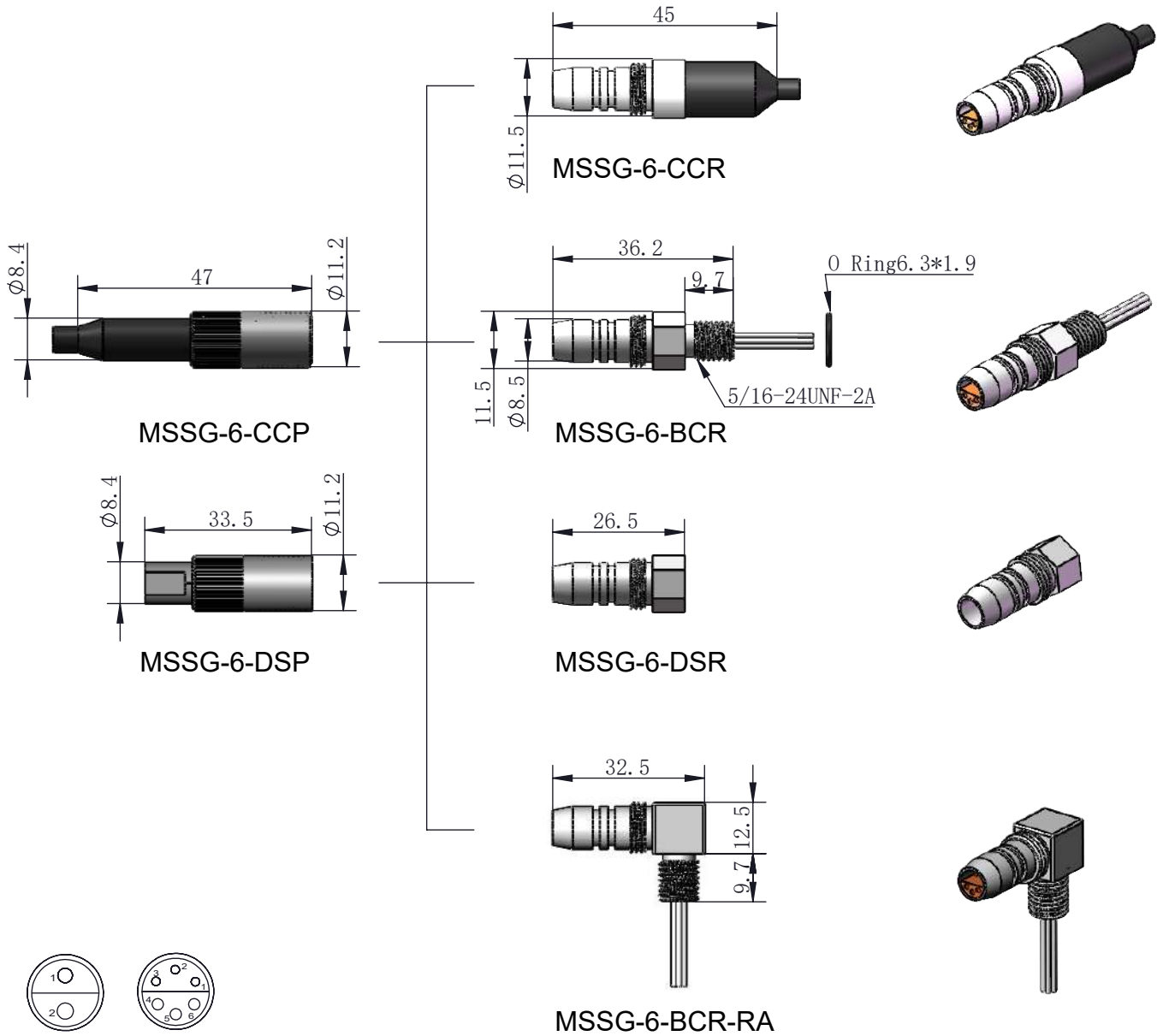


Specification: _____
 Number of cores: 4 core _____
 Wire cross-section(Plug): 8mm² _____
 Wire cross-section(Socket): 8mm² _____
 Electrical Characteristics: 3000V@50Amp _____
 Contact resistance: <0.01Ω _____
 Insulation resistance: >200 MΩ _____
 Durability Life: >500 times _____
 Temperature: -4° ~ +60° C _____
 Depth: 6000 meters(600bar) _____

Wire Color: _____
 1black 2white 3red 4green _____
 Materials: _____
 Plug: Neoprene _____
 Socket: 316 stainless steel/ titanium alloy _____
 Pin: Gold-plated copper _____
 Nut and gasket: Stainless steel _____
 O ring: Nitrile _____
 Locking Sleeve: Stainless steel _____

Dimensions: mm _____
 Thread: Imperial 1/2 _____
 1 inch = 25.4 mm _____
 Can be customized: _____
 1: Cable Length _____
 2: Shell Material: stainless steel/ titanium alloy _____
 3: Screw length _____

Metal shell MSSG series (2, 6 cores)



Male Face View

Specification:

Number of cores: 2, 6 core

Wire cross-section(2 core): 0.5 mm² wire; 300V@2Amp

Wire cross-section(6 core): 0.2 mm² wire; 300V@0.2Amp

Insulation material: Reinforced PPS

Contact resistance: <0.01Ω

Insulation resistance: >200 MΩ

Durability Life: >500 times

Temperature: -4° ~ +60°

CWorking depth: 5000m

Pressure-resistant water depth: 300 meters

Wire Color:

1black 2white 3red

4green 5orange 6blue

Materials:

Plug: Neoprene

Socket: 316 stainless steel/ titanium alloy

Pin: Gold-plated copper

Nut and gasket: Stainless steel

O ring: Nitrile

Dimensions: mm

Thread: Imperial 5/16

1 inch = 25.4 mm

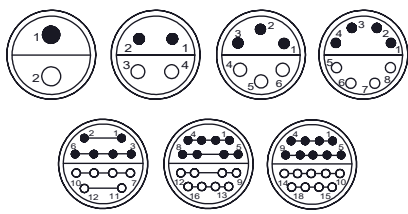
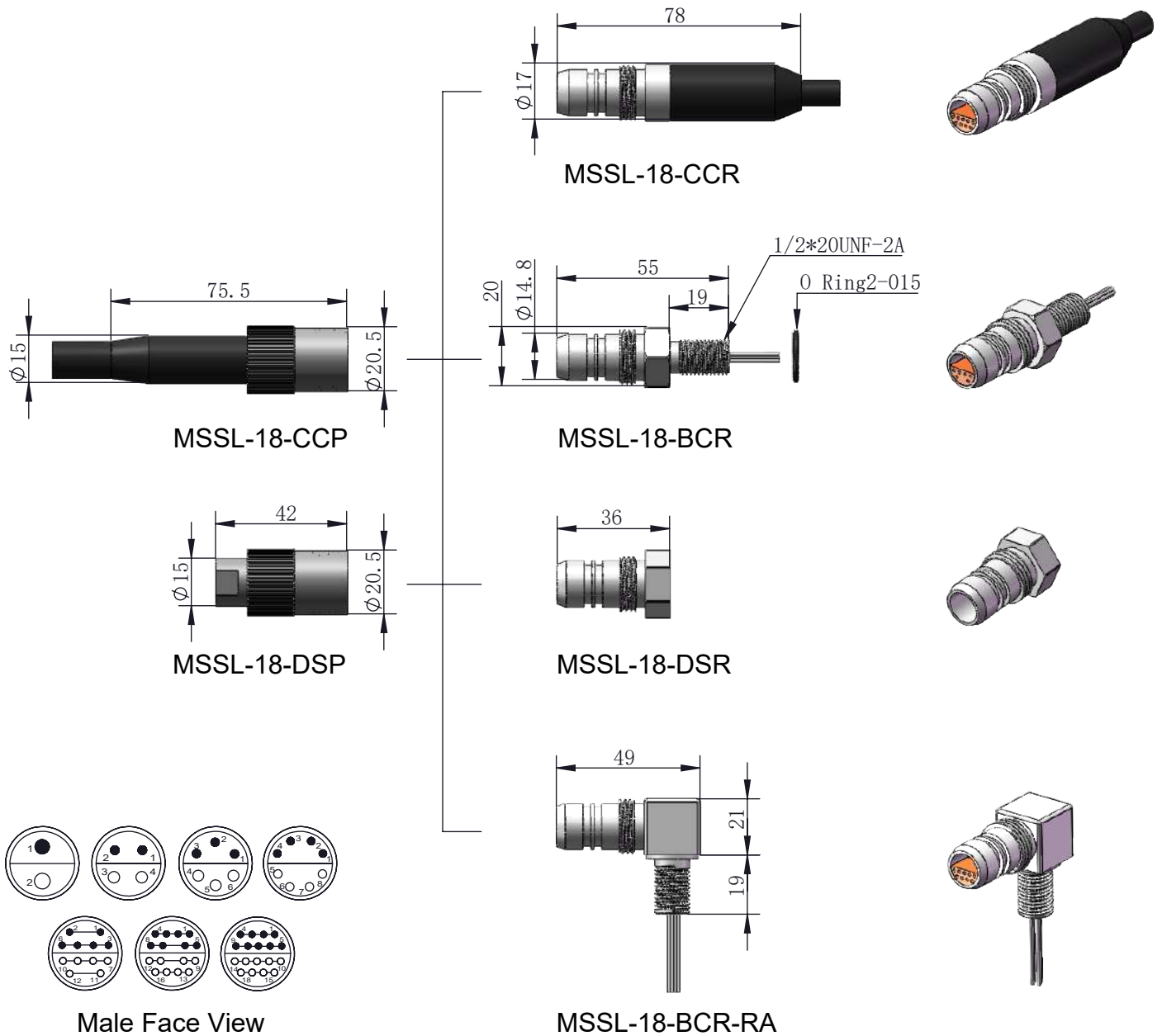
Can be customized:

1: Cable Length

2: Shell Material: stainless steel/ titanium alloy

3: Screw length

Metal Shell MSSL Series (2-18 Cores)



Male Face View

MSSL-18-BCR-RA

Specification:

- Number of cores: 2, 4, 6, 8, 12, 16, 18 core
- Wire cross-section: 0.5-2 mm² wire; 500V@5-20Amp
- Wire cross-section(2-6 core): 1-2 mm² wire; 500V@5-20Amp
- Wire cross-section(8 core): 0.5-1 mm² wire; 300V@3-6Amp
- Wire cross-section(16 core): 0.3 mm² wire; 300V@2Amp
- Wire cross-section(18 core): 8PairX0.2mm² Cate5 Cable + 2X1mm² Cable Electrical Characteristics: 300V@2-7Amp
- Can be customized: 1000-2000V@2-30Amp
- Insulation material: reinforced PPS
- Contact resistance: <0.01Ω
- Insulation resistance: >200 MΩ

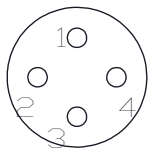
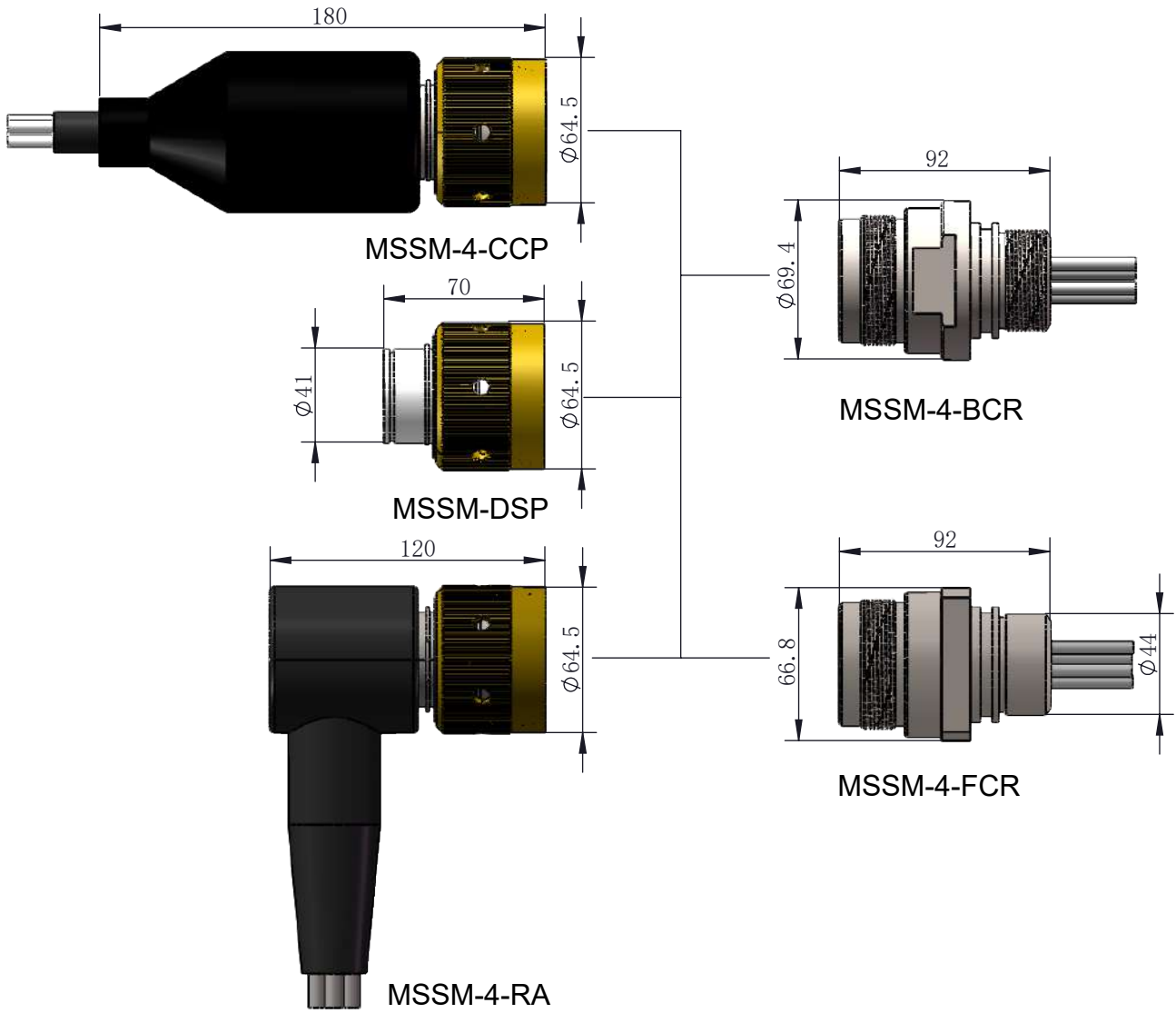
Durability Life: >500 times **Temperature:**

- 4° ~ +60° C
- Working depth: 5000m
- Pressure-resistant water depth: 3000meter
- Wire Color:
- Wire Color for 2-8pin:
1black 2white 3red 4green 5orange
6blue 7purple 8brown
- Wire Color for 12-18pin: White
- Materials:
Plug: Neoprene
Socket: 316 stainless steel/ titanium alloy

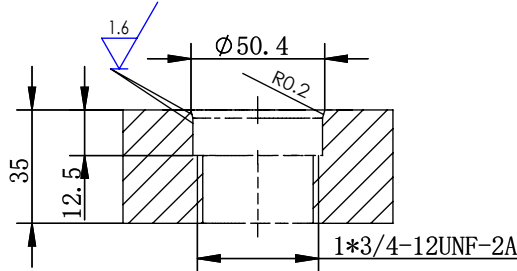
Pin: Gold-plated copper

- Nut and gasket: Stainless steel
- O ring: Nitrile
- Dimensions: mm
- Thread: Imperial 1/2
- 1 inch = 25.4 mm
- Can be customized:
- 1: Cable Length
- 2: Shell Material: stainless steel/ titanium alloy
- 3: Screw length

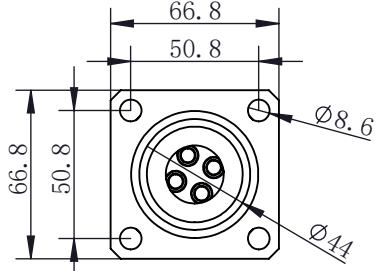
Metal Shell High Voltage Series 4 core



Male Face View



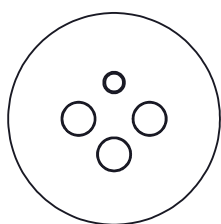
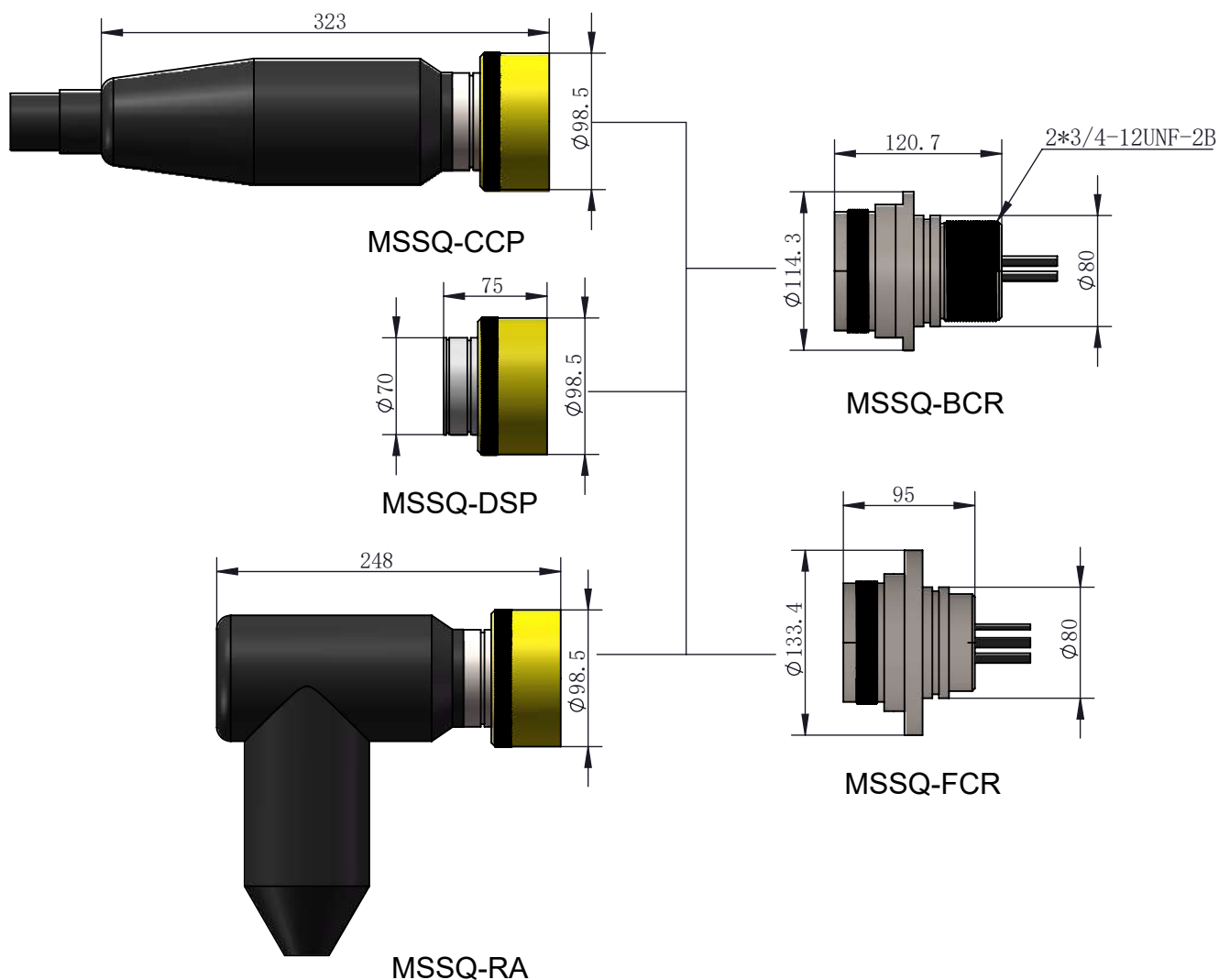
BCR Installation Hole



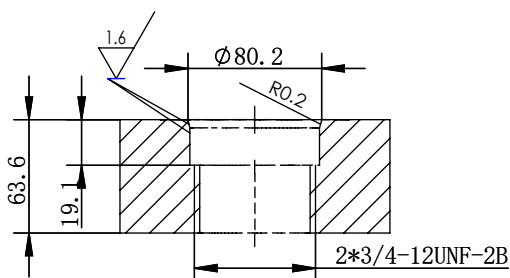
FCR Installation Hole

Specification:	Materials:	Dimensions: mm
Number of cores: 4 core	Insulation material: PEEK	Thread: Inches
MSSM4 Electrical Characteristics: 5000V@20-50Amp (2-6mm ²)	Plug: Neoprene	1 inch = 25.4 mm
Contact resistance: <0.01Ω	Socket: 316 stainless steel	
Insulation resistance: >200 MΩ	Pin: Gold-plated copper	Can be customized:
Durability Life: >500 times	Nut and gasket: Stainless steel	1: Cable Length
Temperature: -4° ~ +60°C	O ring: Nitrile	2: Shell Material: stainless steel/ titanium alloy
Depth: 6000 meters(600bar)	Locking Sleeve: Polyoxymethylene	3: Screw length

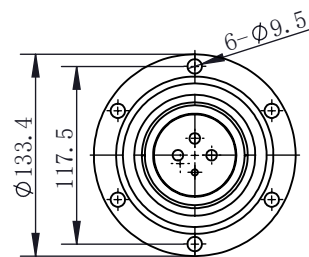
Metal Shell High Voltage Series 3 core



Male Face View



BCR Installation Hole



FCR Installation Hole

Specification:

Number of cores: 4 core

MSSQ Electrical Characteristics:

1-3 Core : 5000V@100Amp (16mm²)

4芯 : 5000V@15Amp (2平)

Contact resistance: <0.01Ω

Insulation resistance: >200 MΩ

Durability Life: >500 times

Temperature: -4° ~ +60°C

Depth: 6000 meters(600bar)

Materials:

Insulation material: PEEK

Plug: Neoprene

Socket: 316 stainless steel

Pin: Gold-plated copper

Nut and gasket: Stainless steel

O ring: Nitrile

Locking Sleeve: Polyoxymethylene

Dimensions: mm

Thread: Inches

1 inch = 25.4 mm

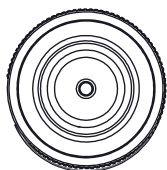
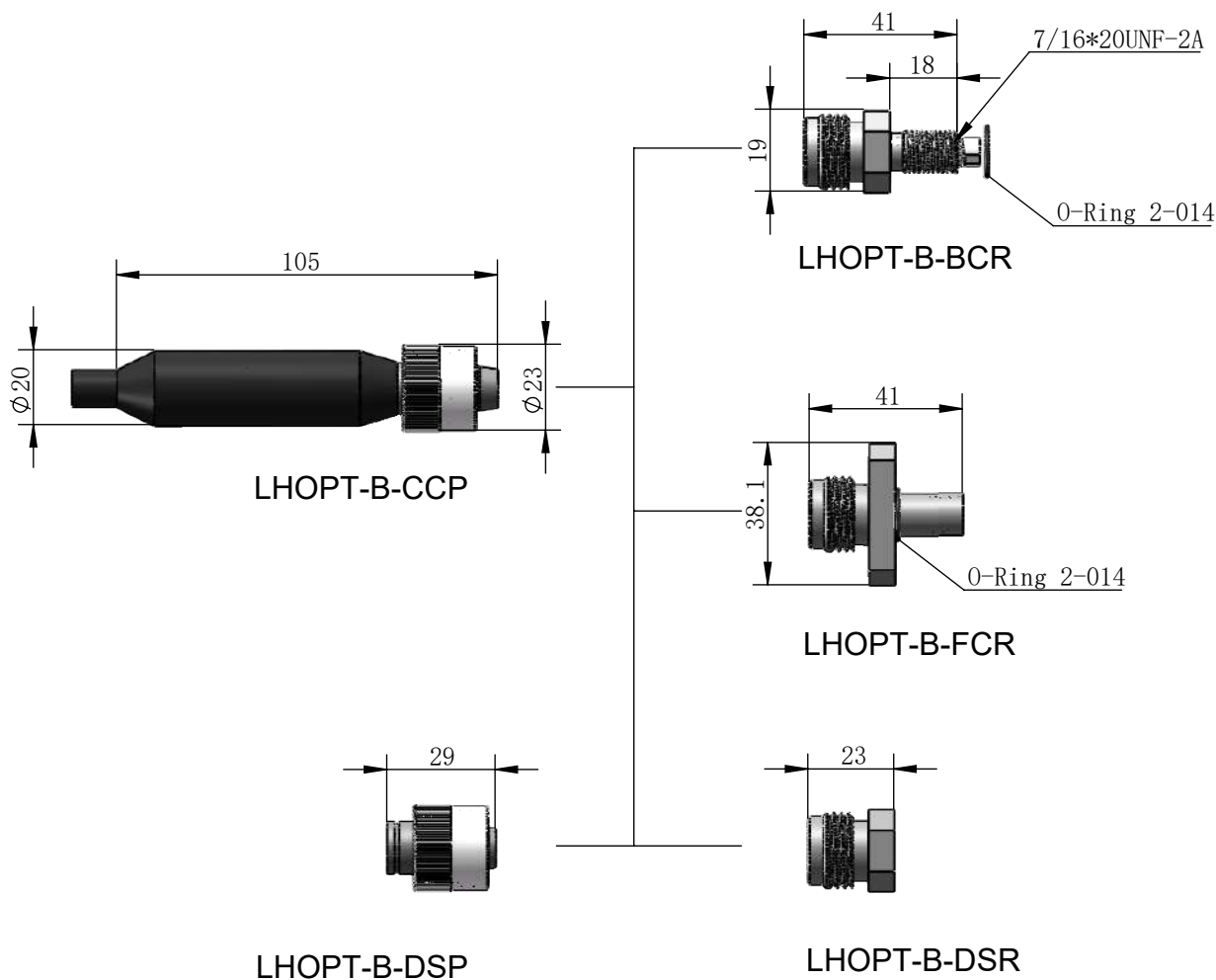
Can be customized:

1: Cable Length

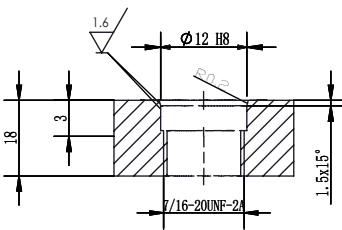
2: Shell Material: stainless steel/ titanium alloy

3: Screw length

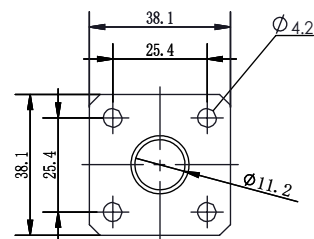
Fiber Series (1Pin)



Male Face View



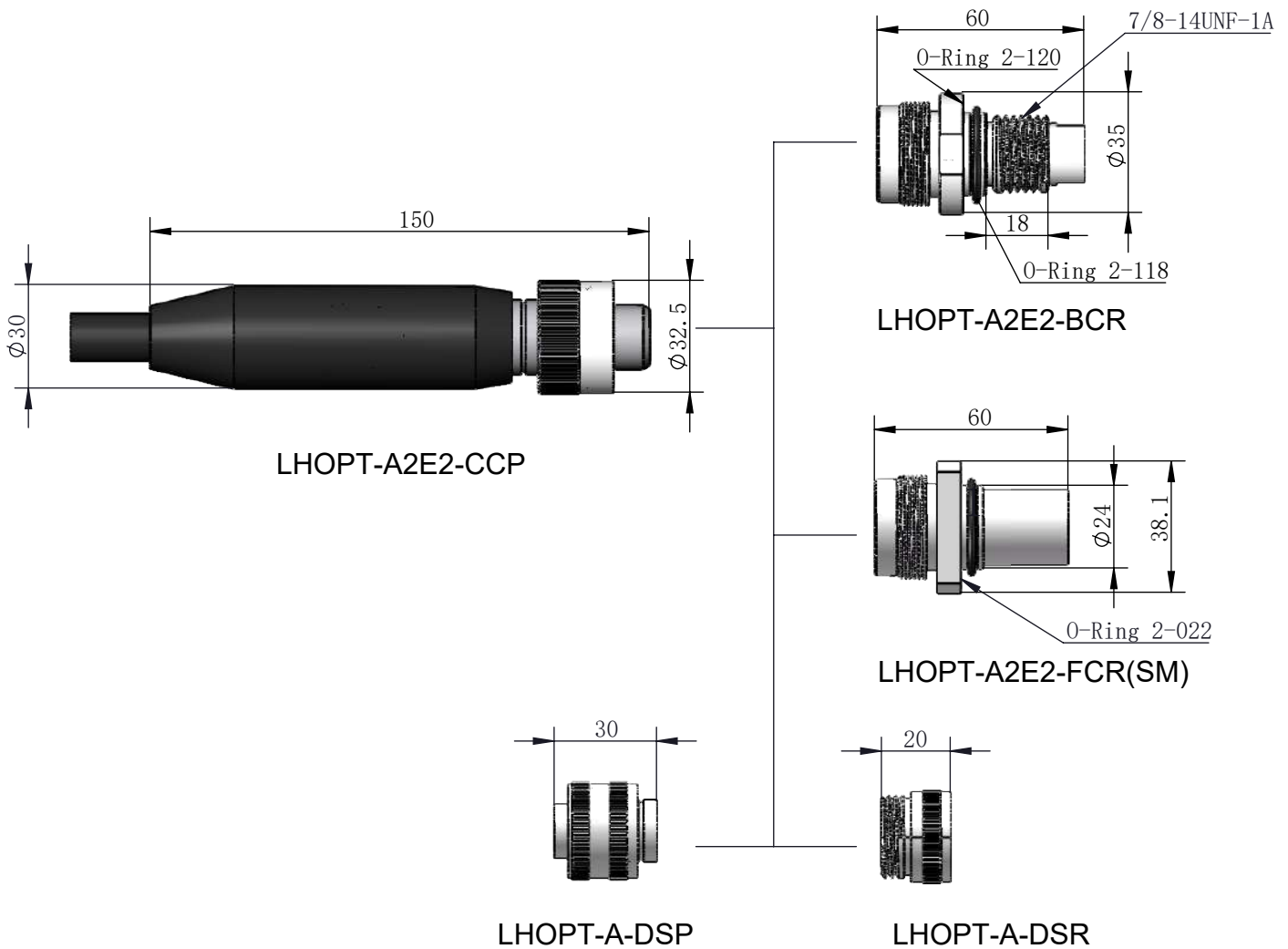
BCR Installation Hole



FCR Installation Hole

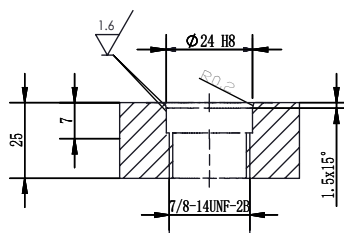
Fiber Series 1Pin :	Working depth: 6000m	Materials:
Single-mode optical parameters (SM): :	Durability Life: >1000 times	Shell Material: Stainless Steel 316L (TI Alloy Shell Optional)
Wavelength : 1310-1650nm	Fiber Connector Type: LC, ST, FC, SC (optional)	Fiber Optic Ferrule: Special Ceramic
Attenuation : Max2.5dB	Pigtail: ST connector by default, other optional	O ring: Nitrile
Insertion Loss: 1.0-1.5dB	Storage Temperature : -20°C/+60°C	Dummy Plug: Black POM
Multi-mode optical parameters (MM): :	Operating Temperature : -20°C/+50°C	Watertight Dummy Plug: Stainless Steel 316L (TI Alloy Shell Optional)
Wavelength : 850-1300nm		
Attenuation : Max2.5dB		Dimensions: mm
Insertion Loss: 1.0-1.5dB		Thread: Inches
		1 inch = 25.4 mm

Fiber Series (2 fibreoptical port and 2 electrical port)

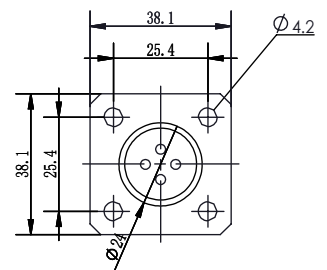


4 1 2
3

Male Face View



BCR Installation Hole



FCR Installation Hole

2 fibreoptical port and 2 electrical port

Single-mode optical parameters (SM):

Wavelength : 1310-1650nm

Attenuation : Max2.5dB

Insertion Loss: 1.0-1.5dB

Multi-mode optical parameters (MM):

Wavelength: 850-1300nm

Attenuation: Max2.5dB

Insertion Loss: 1.0-1.5dB

2 Core Electrical Characteristics:

Wire Color: 1 Black, 2 White

Electrical Characteristics: 300V@6-15AMP(Single Pin)

Working depth: 6000m

Durability Life: >1000 times

Fiber Connector Type: LC, ST, FC, SC (optional)

Pigtail: ST connector by default, other optional

Storage Temperature : -20°C/+60°C

Operating Temperature : -20°C/+50°C

Materials:

Shell Material: Stainless Steel 316L (TI Alloy Shell Optional)

Fiber Optic Ferrule: Special Ceramic

O ring: NBR

Dummy Plug: Black POM

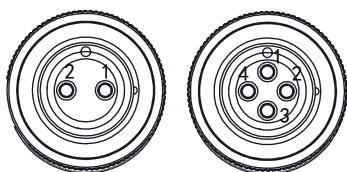
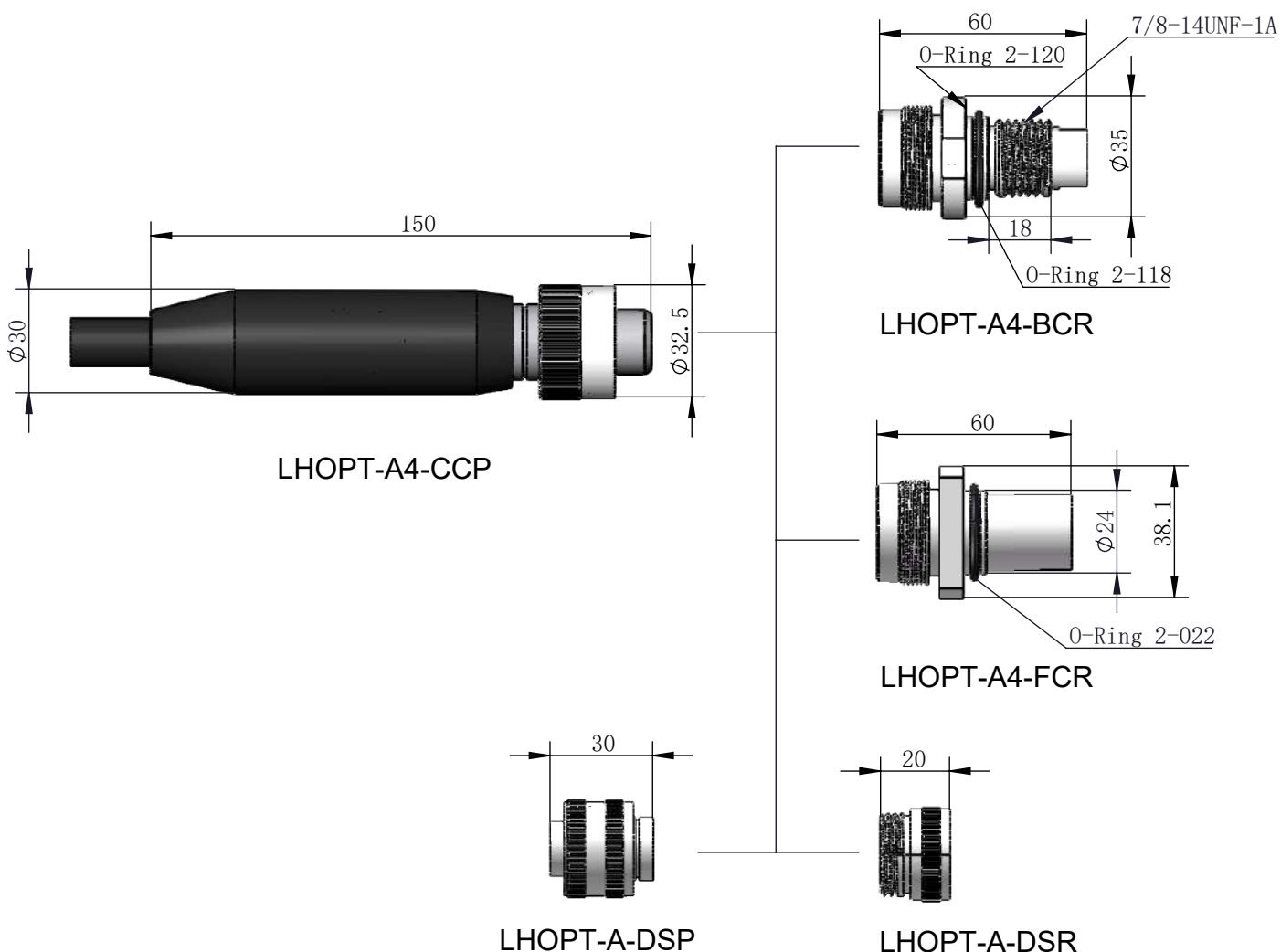
Watertight Dummy Plug: Stainless Steel 316L (TI Alloy Shell Optional)

Dimensions: mm

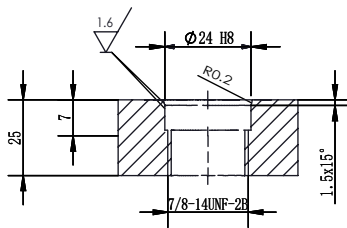
Thread: Inches

1 inch = 25.4 mm

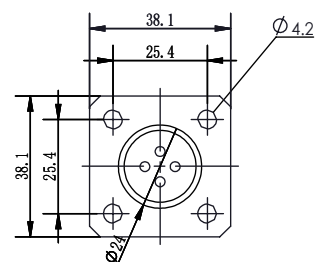
Fiber Series (2, 4 cores)



Male Face View



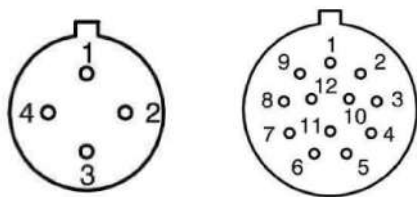
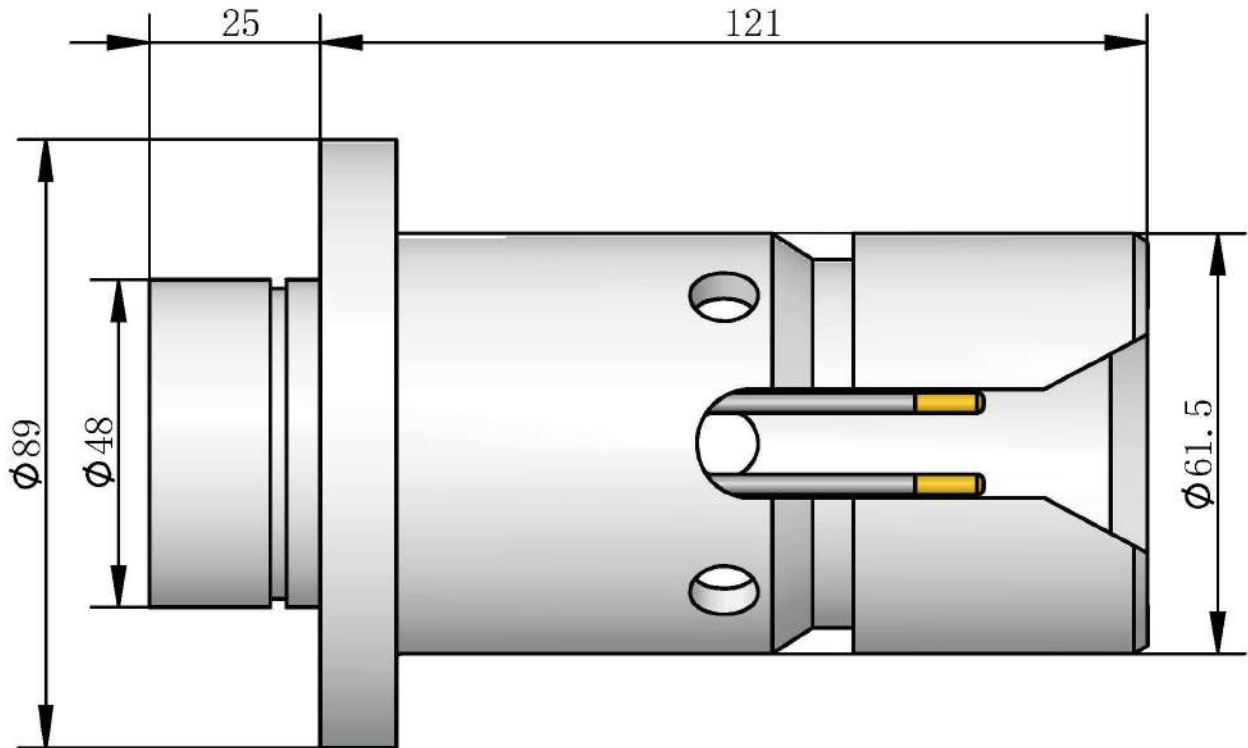
BCR Installation Hole



FCR Installation Hole

Fiber Series 2, 4 cores:	Working depth: 6000m	Materials:
Single Mode Optical Parameters (SM):	Durability Life: >1000 times	Shell Material: Stainless Steel 316L (Ti Alloy Shell Optional)
Wavelength: 1310-1650nm	Fiber Connector Type: LC, ST, FC, SC (optional)	Fiber Optic Ferrule: Special Ceramic
Attenuation: Max2.5dB	Pigtail: ST connector by default, other optional	O ring: NBR
Insertion Loss: 1.0-1.5dB	Storage Temperature: -20°C/+60°C	Dummy Plug: Black POM
Multimode Optical Parameters (MM):	Operating Temperature: -20°C/+50°C	Watertight Dummy Plug: Stainless Steel 316L (Ti Alloy Shell Optional)
Wavelength: 850-1300nm		
Attenuation: Max2.5dB		Dimensions: mm
Insertion Loss: 1.0-1.5dB		Thread: Inches
		1 inch = 25.4 mm

Underwater wet-mate connector



Male Face View

Specification:

Number of cores: 4 、 12core

4芯: Socket 89×148.5 12芯:Socket 106×154

Electrical Characteristics: 1000V@5A

Contact resistance: <4MΩ

Insulation resistance: >1000mΩ

Durability Life: <50 times

Temperature: -4° ~ +60° C

Depth: 6000 meters(600bar)

Function:

Connection Method: ROV Wet-Mateable, the plug with electrical contact system

Adjust the pressure balance oil chamber, ROV wet plug-in device. Locking machine

Materials:

Plug: Neoprene

Socket: 316 stainless steel/ titanium alloy

Pin: Gold-plated copper Nut and gasket: Stainless steel

O ring: Nitrile

Dimensions: mm

1 inch = 25.4 mm

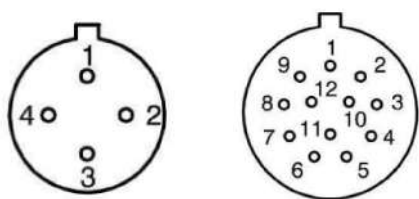
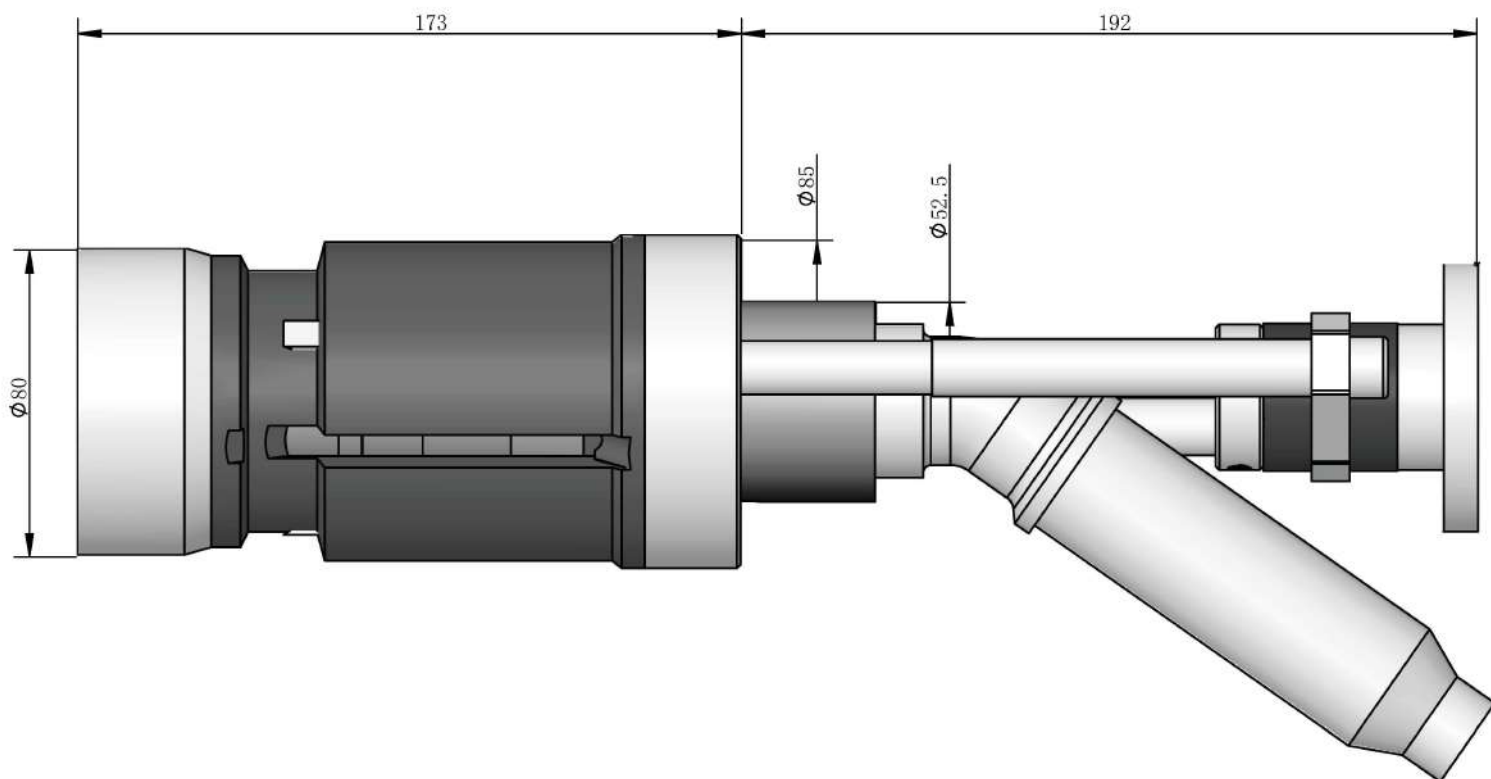
Can be customized:

1: Cable Length

2: Shell Material: stainless steel/ titanium alloy

3: Screw length

Underwater wet-mate connector



Male Face View

Specification:

Number of cores: 4 、 12core

4芯: socket 89×148.5 12芯: socket 106×154

Electrical Characteristics: 1000V@5A

Contact resistance: <4MΩ

Insulation resistance: >1000mΩ

Durability Life: <50 times

Temperature: -4° ~ +60° C

Depth: 6000 meters(600bar)

Function:

Connection Method: ROV Wet-Mateable, the plug with electrical contact system.

Adjust the pressure balance oil chamber, ROV wet plug-in device. Locking machine

Materials:

Plug: Neoprene

Socket: 316 stainless steel/ titanium alloy

Pin: Gold-plated copper Nut and gasket: Stainless steel

O ring: Nitrile

Dimensions: mm

1 inch = 25.4 mm

Can be customized:

1: Cable Length

2: Shell Material: stainless steel/ titanium alloy

3: Screw length